

# “引领”与“保障”的柳州城市规划

——「创新区的城市规划」交流

“LEADING” and “GUARANTEE”

石志高

ZhiGao Shi

柳州市城乡规划设计研究院有限公司

Urban and Rural Planning and Design Institute Co., Ltd of LiuZhou.

2021.7.23



Chapter 1

Territorial spatial planning system

# 国土空间规划体系

## 01科学构建规划体系——确保城市发展逻辑一以贯之

Establish a planning system in a scientific way to ensure that the logic of urban development is consistent.

## 02总体规划——明确城市定位与战略目标

Master plan defines the city orientation and strategic objectives.

## 03详细规划——落实总体规划、强化规划落地

Detailed planning to carry out the Master plan, strengthen the ground.

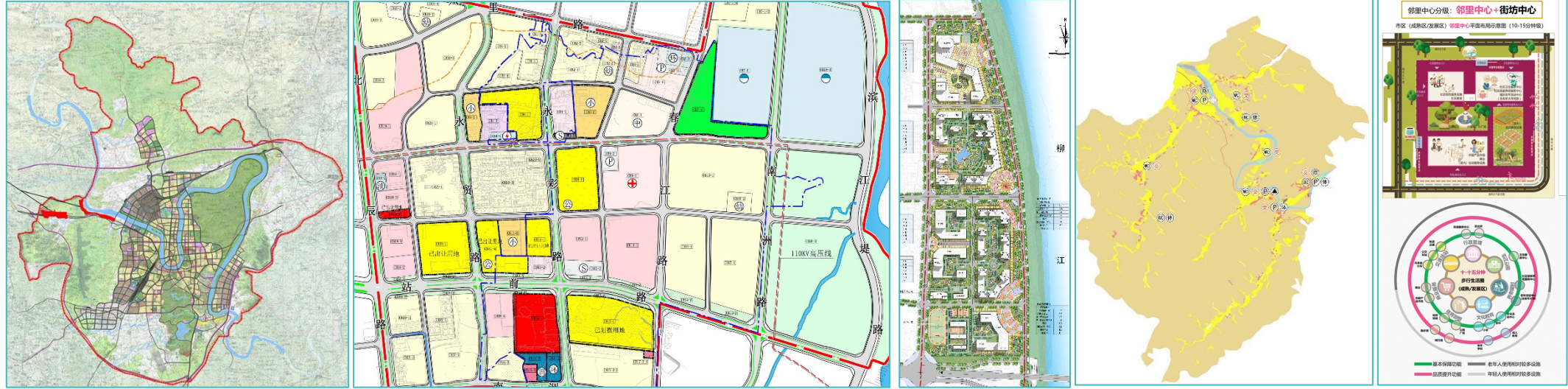
## 04城市设计——提高规划决策的合理性

Urban design improves the rationality of planning decisions.

## 05专项规划——注重民生、关注城市特色

The special plan focuses on people's livelihood and urban characteristics.

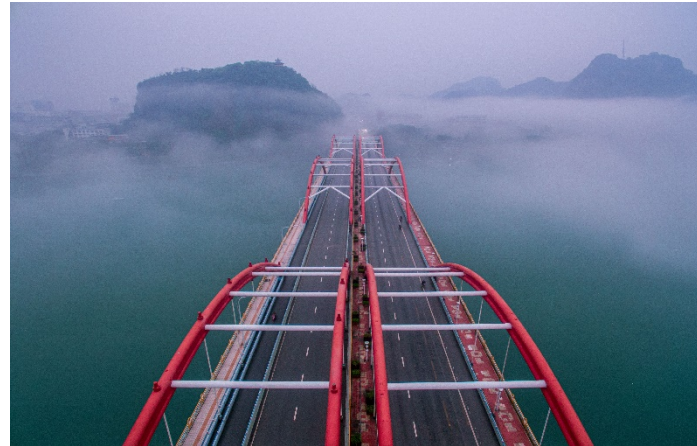




逐步建立并完善以国土空间总体规划（城市总体规划）；控制性详细规划、修建性详细规划、村庄规划；各类专项规划为核心的国土空间规划体系。有效建立起柳州建设发展指引以及规划建设项目库，为市委市政府提供了重要的决策依据。

To gradually establish and improve the overall planning of territorial space (urban master plan); Controlling detailed planning, construction detailed planning, village planning; A territorial spatial planning system with various special plans at its core. Liuzhou construction and development guidance and planning and construction project database has been effectively established, which provides an important decision-making basis for the municipal Party committee and government.





紧紧围绕工业、交通、历史文化名城、山水环境等精准定位发展主题：

工业方面，工业发展目标从再造一个工业柳州到高质量万亿工业城市；

交通方面，对外交通争取突破，内部交通组织高效；

历史文化名城方面，不断拓展和提升名城保护的内涵；

山水特色的城市环境方面，始终坚持城市发展与生态环境相协调，努力营造柳州大盆景特色风貌。

Closer to the industry, transportation, historical and cultural, landscape environment and other precise positioning of the development of the theme.

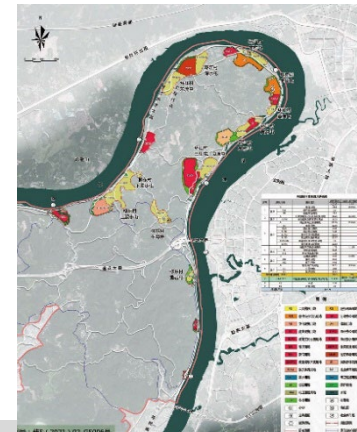
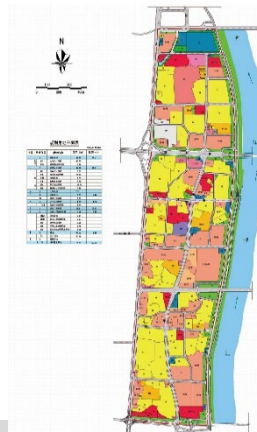
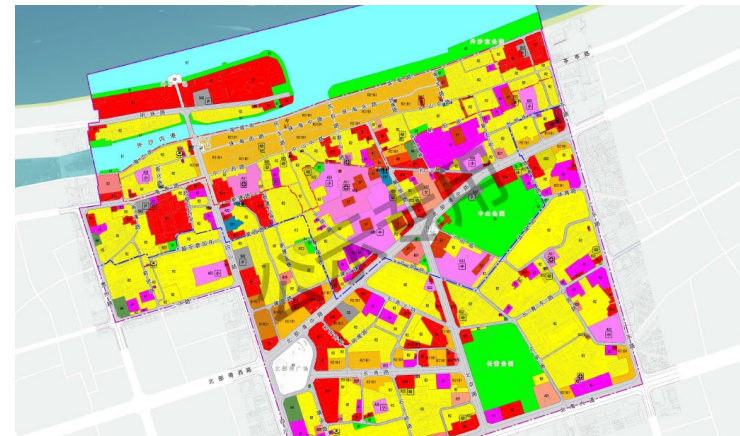
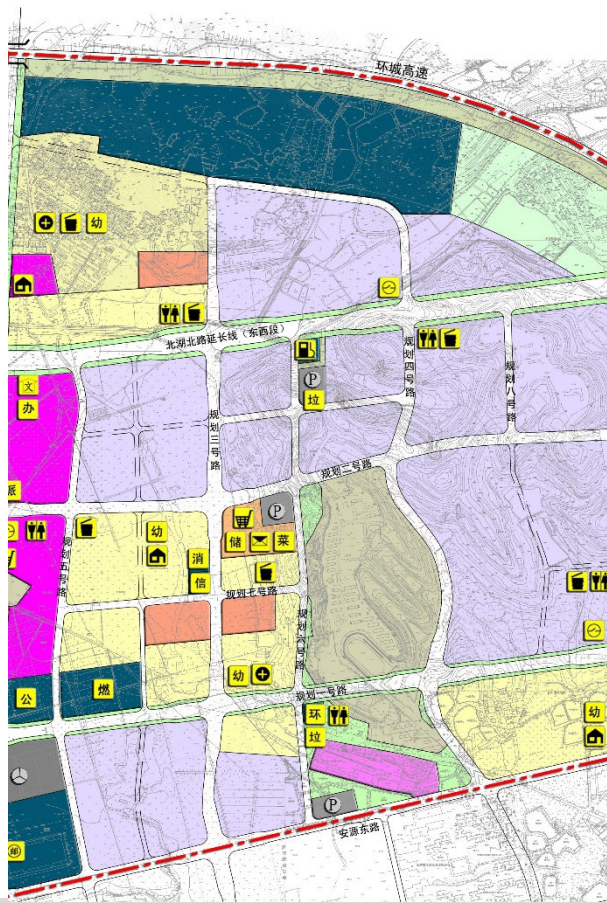
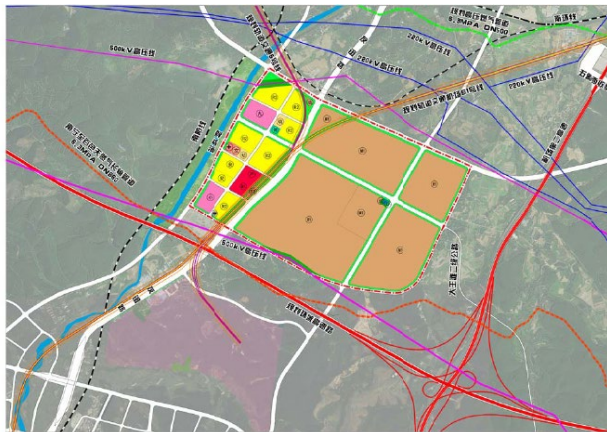
In terms of industry, the industrial development goal is from rebuilding an industrial Liuzhou to a high-quality industrial city of one trillion yuan.

In terms of transportation, the external transportation is striving for a breakthrough, and the internals organization is efficient.

In terms of famous historical and cultural cities, the connotation of protection of famous cities should be continuously expanded and promoted.

In terms of the urban environment with landscape characteristics, we always adhere to the coordination between urban development and ecological environment, and strive to create Liuzhou large-sized bonsai features.





坚持控规编制的前瞻性。柳州于2012年在全区率先实现了全市控规全覆盖，确保了控规能对每一个地块的规划建设提供法定依据，促进了规划管理的科学化和法制化。

通过“控规一张图”成果，能直观了解地块及周边规划情况，方便快捷查询地块性质以及中小学、医院、养老设施、公共绿地等公共设施的情况，并对后续规划总平面图和建筑单体方案审批提供有效指导。

Adhere to the forward-looking control planning. In 2012, Liuzhou took the lead in realizing the full coverage of the city's control and planning, which ensured that the control and planning could provide legal basis for the planning and construction of each land parcel, and promoted the scientific and legalized planning and management.

Through the results of "One Picture for Regulatory Plan", we can intuitively understand the planning situation of the plot and its surrounding areas, easily and quickly query the property of the plot and the distribution of public facilities such as primary and secondary schools, hospitals, elderly care facilities and public green Spaces, and provide effective guidance for the subsequent general plan of planning and the approval of single building scheme.





柳江新城城市设计



柳东龙湖核心区总体策划及概念规划设计



沙塘湿地公园城市设计

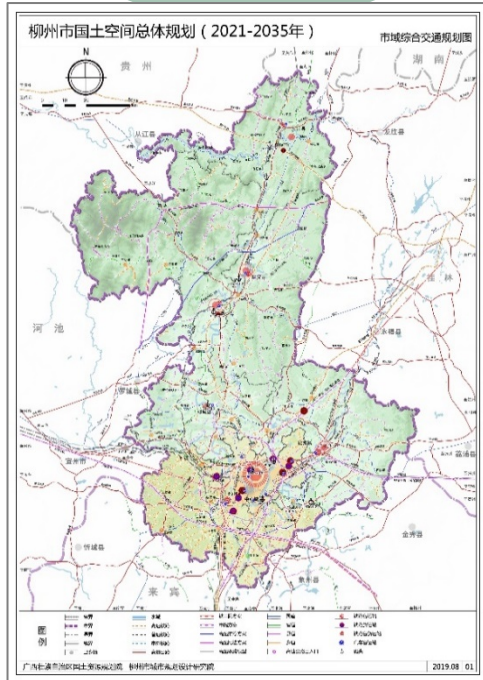
截至2020年底，柳州中心城区、柳东新区及北部生态新区近期建设区域、共编制城市设计45项，编制面积约170平方公里。这些城市设计成果的突出特点是与法定控制性详细规划、技术管理规定或建设项目审批内容紧密结合，将设计目标和控制引导要求落实到建筑设计或具体建设控制，即面向实施的城市设计。

By the end of 2020, a total of 45 urban design projects, covering an area of about 170 square kilometers, have been compiled for the recent construction areas of Liuzhou central urban area, Liudong New Area and Northern Ecological New Area. The outstanding feature of these urban design results is that they are closely combined with the statutory regulatory detailed planning, technical management regulations or construction project approval content, and the design objectives and control guidance requirements are implemented into the architectural design or concrete construction control, that is, the implementation-oriented urban design.



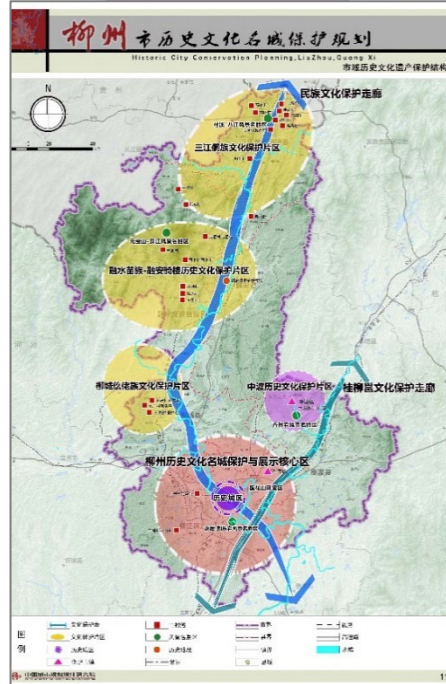
①

交通  
The traffic



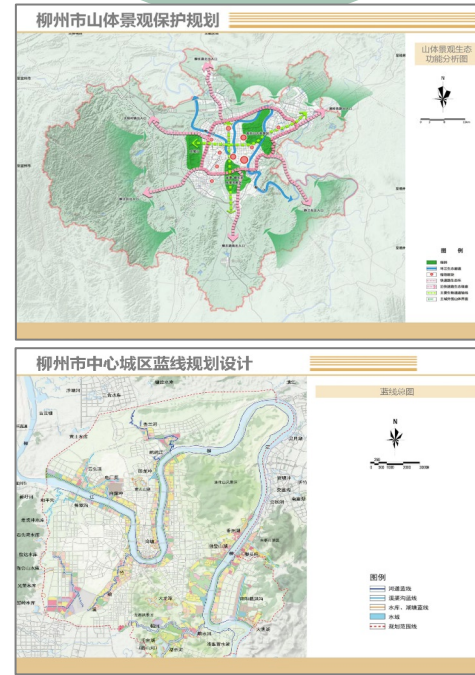
②

历史文化  
History and culture



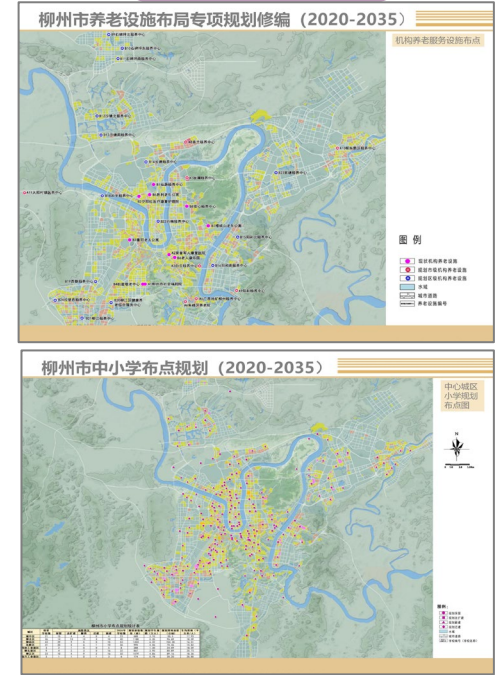
③

城市山水风貌特色  
City landscape features



④

民生  
Livelihood



专项规划的编制始终以完善城市公共空间和配套服务设施建设，提高城市宜居水平，满足人民日益增长的美好生活需求为目标，组织开展包括《柳州市综合交通规划》、《柳州市历史文化名城保护规划》、《柳州市养老设施布局专项规划修编（2020-2035）》、《柳州市中小学布点规划（2020-2035）》、《柳州市山体景观保护规划》、《柳州市中心城区蓝线规划设计》等众多注重民生、关注城市特色的专项规划。

The formulation of the special plan has always been aimed at improving the construction of urban public space and supporting service facilities, improving the livable level of the city, and meeting the people's ever-growing needs for a better life "Liuzhou city comprehensive traffic planning", "liuzhou historical and cultural city protection planning", "liuzhou endowment facilities layout special planning revision (2020-2035)", "liuzhou city planning (2020-2035), the stationing of primary and secondary schools," liuzhou mountain landscape protection planning", the center of liuzhou urban blue line planning and design, such as many pay attention to the livelihood of the people, pay close attention to Special planning of urban characteristics

# 二

Chapter 2

The Fourteenth Five-Year Plan focuses on sustainable urban development

## 十四五重点关注的城市可持续发展

### 01完善15分钟社区生活圈——助力城市生活品质的可持续发展

Improve the 15-minute community life circle, and contribute to the sustainable development of urban life quality.

### 02创新管理助力城市建设——确保科技支撑能力的可持续发展

Innovative management helps urban construction and ensures the sustainable development of scientific and technological support capacity.

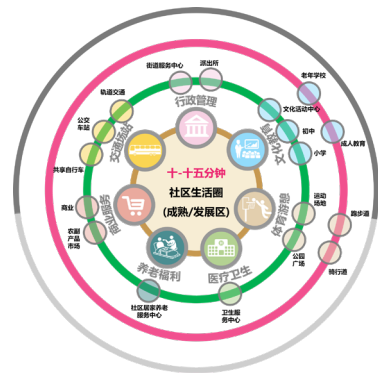
### 03保护城市山水特色风貌——助力城市形象品牌的可持续发展

Protect the city landscape features help the sustainable development of the city image brand.

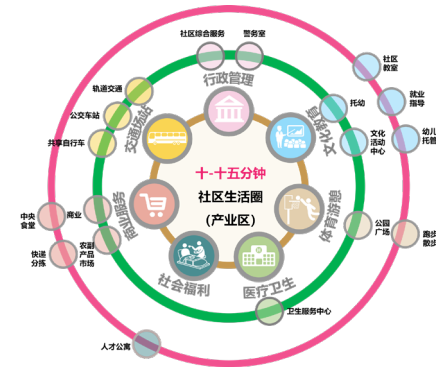
### 04提高自然资源保障能力——保障城市自我诉求的可持续发展

Improve the ability to guarantee natural resources to ensure the sustainable development of the city's self-demand.





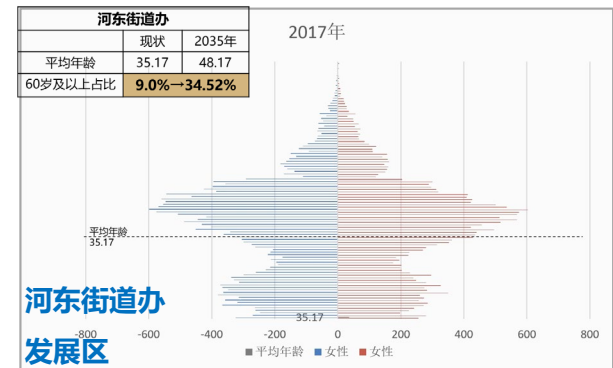
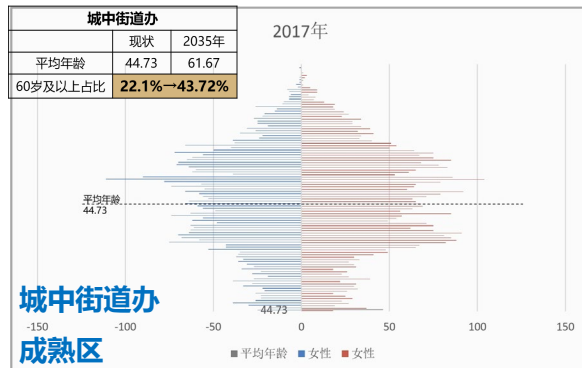
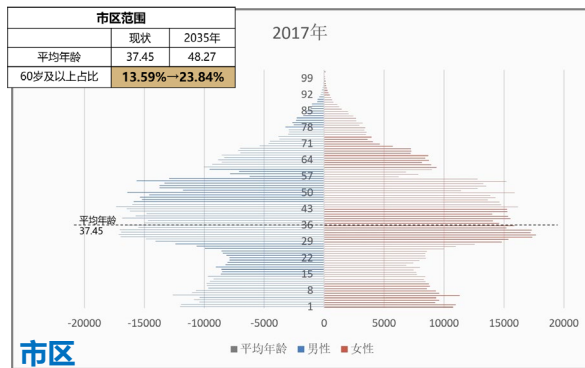
基本保障功能 老年人使用相对较多设施  
品质提升功能 年轻人使用相对较多设施



不同年龄人口



需求设施差异



通过调查研究，参考国家及地方相关规范以及国内其他先进城市15分钟社区生活圈建设经验，立足于柳州15分钟社区生活圈现状，充分运用网络爬虫技术爬取全市道路数据，构建全市的步行可达网络体系；以及分析柳州社区级人口年龄数据，判断人口分布及变化规律。提出将社区生活圈划分为5-10分钟级、10-15分钟级两个层级，并配设具有一定差异性的公服设施及规模。

Based on the status quo of Liuzhou 15-minute community living circle, this paper makes full use of web crawler technology to crawl the road data of the whole city and construct the walking accessible network system through investigation and research, referring to relevant national and local regulations and the construction experience of 15-minute community living circle in other advanced cities in China. And analyze Liuzhou community level population age data to judge the population distribution and change rules. It is proposed to divide the community life circle into two levels: 5-10 minutes and 10-15 minutes, and to set up different public service facilities and scales.

# 柳州市 人民政府文件

柳政发〔2017〕12号

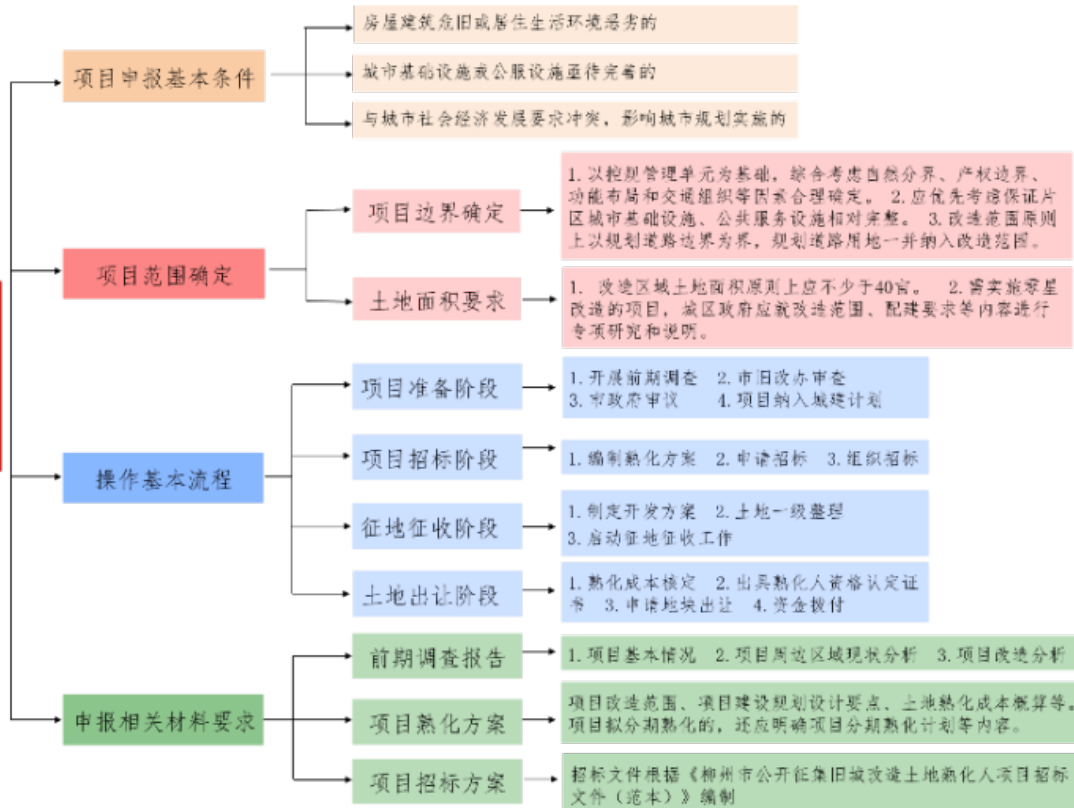
## 柳州市人民政府关于 印发《关于引入社会资本参与 旧城改造土地熟化工作的实施意见》的通知

各县、区人民政府，市直机关各有关委、办、局，柳东新区、北部生态新区（阳和工业新区）管委会，各有关单位：

《关于引入社会资本参与旧城改造土地熟化工作的实施意见》已经市委、市人民政府同意，现印发给你们，请认真组织实施。

柳州市人民政府  
2017年3月13日

### 土地熟化



依托旧城改造项目的落地完善十五分钟社区生活圈建设。

——旧城改造土地熟化模式，相比以前的旧城改造项目的“捆绑出让模式”，采用“熟化人模式”净地后出让旧改地块。是对柳州市原有旧城改造政策的补充和完善，引入社会资本参与土地熟化，可以多渠道筹集资金，弥补政府购买模式和PPP模式的不足，加快城市更新改造步伐。

Relying on the construction of the old city reconstruction project, the 15-minute community living circle construction will be perfected.-- The maturation mode of old city reconstruction land. Compared with the "bundled transfer mode" of previous old city reconstruction projects, the "matured person mode" is adopted to sell the old renovated land after clearing the land. It is a supplement and improvement to the original urban reconstruction policy of Liuzhou. The introduction of social capital to participate in land maturation can raise funds through multiple channels, make up for the deficiency of government purchase mode and PPP mode, and accelerate the pace of urban renewal and reconstruction.





2017—2020年，柳州市陆续推出多个旧城改造项目。今后，随着旧城改造项目落地实施步伐的进一步加快，柳州市城市环境、城市品质也必将走上一个新的台阶，进而推进城市的可持续发展。

From 2017 to 2020, Liuzhou has successively launched a number of old city renovation projects. In the future, with the further acceleration of the implementation of the old city reconstruction project, the urban environment and urban quality of Liuzhou will surely step up to a new level, and then promote the sustainable development of the city.

Improve the 15-minute community living circle

## 规划阶段的工作重点

Key points in the planning stage



01

### 项目背景与概况

- 1.1 项目背景
- 1.2 项目区位
- 1.3 现状用地分析
- 1.4 现状权属分析
- 1.5 现状建筑分析
- 1.6 现状交通分析
- 1.7 现状排水管网情况
- 1.8 周边建设情况

02

### 前期分析

- 2.1 拆迁安置概述
- 2.2 现行控规基本情况
- 2.3 控规调整策略
- 2.4 控规调整方案
- 2.5 控规调整方案前后对比

03

### 规划方案

- 3.1 规划总平面图
- 3.2 功能构成
- 3.3 地块建筑容量控制
- 3.4 景观分析
- 3.5 消防分析
- 3.6 日照分析
- 3.7 公建配套分析
- 3.8 交通分析
- 3.9 道路竖向及排水

04

### 三维模拟分析

- 4.1 城市天际线分析
- 4.2 各视点分析示意
- 4.3 三维模拟效果图



### ① 拆迁安置实施方案以入户民意调查和基础实施投入为重点。



柳州市旧城改造  
燎原路—九头山片区土地熟化项目拟改造范围汇报

编制单位：柳州市鱼峰区人民政府 柳州市旧城改造服务处

### ② 规划容量匹配公共服务设施与公共交通的高服务水平。

#### 3.7 公建配套分析



分类	名称	用地面积 (m <sup>2</sup> )	规模	备注
小学	燎原路小学	40000	30班, 1350人	规划扩建
小学	规划小学	19782.7	24班, 1080人	规划新建
中学	羊角山中学	26691.8	36班, 1800人	规划扩建

分类	名称	用地面积 (m <sup>2</sup> )	规模	备注
幼儿园	规划幼儿园	7000	15班, 450人	小区配建
小学	燎原路小学	40000	54班, 2430人	规划扩建
小学	规划小学	23712	30班, 1350人	规划新建
中学	羊角山中学	31164.5	39班, 1950人	规划扩建
邻里中心	规划邻里中心	6100	建筑面积 12200m <sup>2</sup>	规划新建

分类	规划规模 (班)
幼儿园	原控规: - 调整后: 15班 (1处)
小学	原控规: 54班 (2处) 调整后: 84班 (2处)
中学	原控规: 36班 (1处) 调整后: 39班 (1处)

◆ 调整后规划研究范围内人口增加约200人, 公建配套设施根据需求作适当调整, 需增加幼儿园144生(约3班)、小学256生(约6个班)、中学128生(约3个班):

1. 规划研究范围新增1处幼儿园 (15班);
2. 扩建燎原路小学 (增加24班)、规划小学 (增加6班);
3. 扩建羊角山中学 (增加3个班);
4. 规划新增邻里中心及社区级配套公共服务设施。

#### 3.8 交通分析

##### 交通改善措施建议

#### 4. 增设公交线路, 优化居民出行结构

近期解决542路公交车回车场问题后, 542路先于九头山站公交首末站开通, 则本案公交线路组织重点解决白云路以南片区居民的公交出行需求。

建议首末站分别在西侧、南侧设置出入口, 西侧(临燎原路)为右进右出口, 南侧(临九头山路)为全转向出入口, 且南侧出入口距离交叉口80米, 满足规范地块开口要求。

规划共设置3条公交支线, 25个公交站点。



### ③ 与城市片区风貌相协调。

#### 4.3 三维模拟效果图

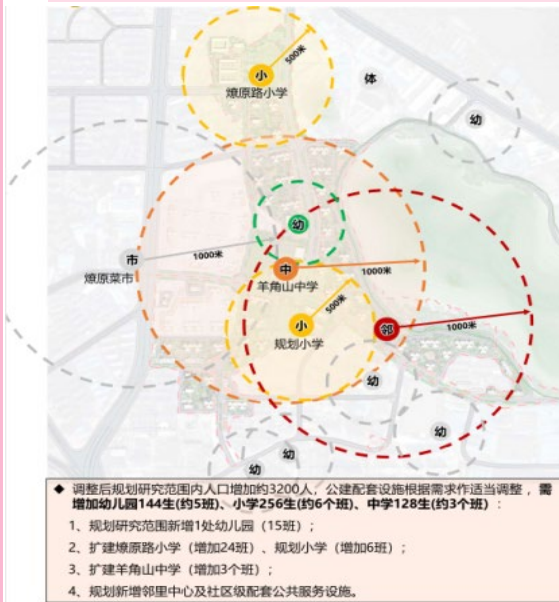


整体鸟瞰图



五岔路口视点人眼效果

### 公建配套分析



熟化范围公建配套情况 (原控规)

分类	名称	用地面积 (m <sup>2</sup> )	规模	备注
小学	燎原路小学	40000	30班, 1350人	规划扩建
	规划小学	19782.7	24班, 1080人	规划新建
中学	羊角山中学	26691.8	36班, 1800人	规划扩建

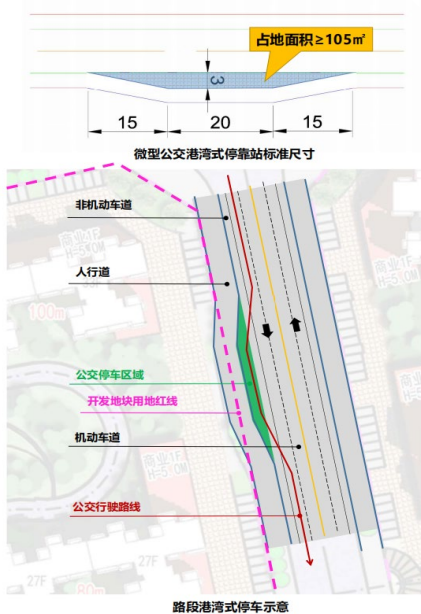
熟化范围公建配套情况 (调整后)

分类	名称	用地面积 (m <sup>2</sup> )	规模	备注
幼儿园	规划幼儿园	7000	15班, 450人	小区配建
小学	燎原路小学	40000	54班, 2430人	规划扩建
	规划小学	23712	30班, 1350人	规划新建
中学	羊角山中学	31164.5	39班, 1950人	规划扩建
邻里中心	规划邻里中心	6100	建筑面积 12200m <sup>2</sup>	规划新建

调整前后对比

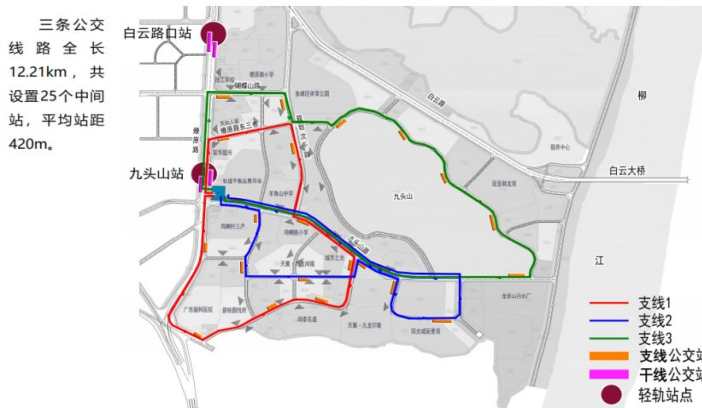
分类	规划规模 (班)
幼儿园	原控规: -
	调整后: 15班 (1处)
小学	原控规: 54班 (2处)
	调整后: 84班 (2处)
中学	原控规: 36班 (1处)
	调整后: 39班 (1处)

- 调整后规划研究范围内人口增加约3200人, 公建配套设施根据需求作适当调整, 需增加幼儿园144生(约5班)、小学256生(约6个班)、中学128生(约3个班);
- 1. 规划研究范围新增1处幼儿园 (15班);
- 2. 扩建燎原路小学 (增加24班)、规划小学 (增加6班);
- 3. 扩建羊角山中学 (增加3个班);
- 4. 规划新增邻里中心及社区级配套公共服务设施。



### 交通改善措施建议

线路	长度 (km)	站点数量	平均站距 (m)	线路类型
支线1 (红)	3.83	11	383	环线
支线2 (蓝)	3.64	10	404	折返线
支线3 (绿)	4.74	11	474	环线
合计	12.21	25	420	—



优化完善公服设施。针对旧改区在社区基本公共服务设施配置上仍存在服务范围不均衡等问题, 加强片区和组团的公服设施配置, 合理布局基本公服。同时构建中小学、幼儿园、医疗服务机构、文化活动中心、运动场地、社区活动中心、综合商场、街头游园等公服生活圈, 形成多层次、全覆盖、人性化的基本公服网络, 打造高品质的生活环境。

提升改造道路交通设施。优化调整城市道路布局, 推进城市重要交通节点立体化改造, 打通各类尽端路, 提升城市道路通达性和微循环。加强停车设施规划建设, 合理配置停车设施, 有效缓解“停车难”问题。鼓励公交出行, 加密优化公交线路和公交站台规划, 提高公交换乘便捷性。

Improve the public service facilities. In view of the problems of unbalanced service scope in the allocation of basic public service facilities in the old reconstruction areas, the allocation of public service facilities in the districts and groups should be strengthened and the basic public service facilities should be reasonably distributed. At the same time, we will build primary and secondary schools, kindergartens, medical service institutions, cultural activity centers, sports venues, community activity centers, shopping malls, street parks and other public service life circles, so as to form a multi-level, full-coverage and humanized basic public service network and create a high-quality living environment.

Promote reform of road traffic facilities. Urban road layout optimization adjustment, giving impetus to urban important transport node three-dimensional reconstruction, through all kinds of cul-de-sacs, promote clear on the city roads and microcirculation. Strengthen the planning and construction of parking facilities, rationally allocate parking facilities, and effectively alleviate the problem of "difficult parking". Encourage public transportation, encrypt and optimize the planning of bus routes and bus stops, and improve the convenience of bus transfer.





采用三维实景系统平台辅助城市设计（修建性详细规划）——为了进一步保障修规落地建成的实际效果，结合建设完成覆盖城市建成区域的城市实景三维模型，将新技术手段融入城市设计和修规，通过3D建模将片区城市设计导入三维实景系统，与实景山水风貌进行多角度比对校核，最大限度协调城市景观风貌，直观高效地确定片区城市设计调整方案；调整后的城市设计有效兼顾了风貌保护与开发建设，不再片面追求国际化、现代化、大尺度的建筑形态，从而进一步彰显地域特色和地方风貌，也为该片区的控规调整决策提供了重要参考依据。



## 确保科技支撑能力的可持续发展 创新管理助力城市建设

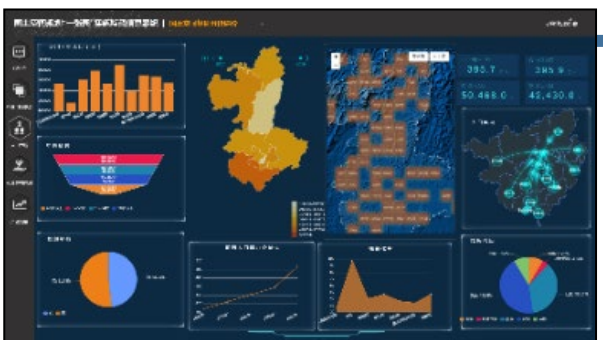
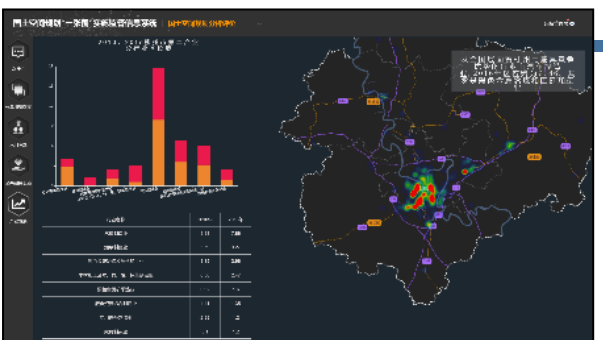
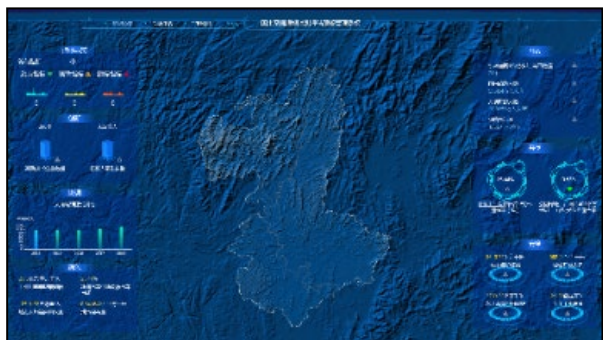
Innovative  
management  
helps  
urban  
development

Auxiliary urban design with 3 d imaging system platform (constructional detailed planning), in order to further ensure the practical effects of the constructional detailed planning landing built combined with the construction of complete coverage cities built area of 3 d model of real blend in new technology and constructional detailed planning and urban design for urban design by 3 d modeling import 3 d imaging system, Comparing and checking with real landscape features from multiple angles to maximize the coordination of urban landscape features and intuitively and efficiently determine the urban design adjustment scheme of the area; After the adjustment, the urban design effectively takes into account the protection and development of landscape, and no longer pursues the international, modern and large-scale architectural form one-sided, so as to further highlight the regional characteristics and local features, and also provide an important reference for the decision-making of the control and planning adjustment of this area.





创新管理助力城市建设 确保科技支撑能力的可持续发展



构建完成全域、全要素、全过程的国土空间规划“一张图”实施监督信息系统，并投入试运行。

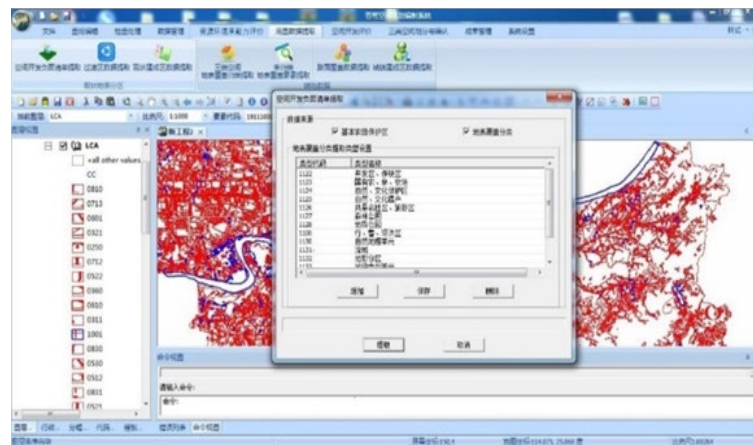
制定《国土空间专项规划编制和审批管理办法》，将经依法批准后纳入市级国土空间基础信息平台，建立全市统一的“国土空间规划一张图”——时空云平台的专项规划数据平台。

通过时空云平台进一步完善智慧化的规划管理，以实现规划的监督检查、数据共享、区域评估、项目编制等一体化目标。

A supervision information system for the implementation of the "One Map" of territorial spatial planning with an all-area, all-factor and all-process planning has been established and put into trial operation. The Measures for the Compilation and Examination and Approval of Special Land and Space Planning has been formulated, which will be incorporated into the municipal land and space basic information platform after being approved according to law, and a unified "one map of land and space planning", a special planning data platform of the space-time cloud platform has been established in the city. The space-time cloud platform is used to further improve the intelligent planning management, so as to realize the integrated goals of planning supervision and inspection, data sharing, regional evaluation, project preparation and so on.



信息共享平台



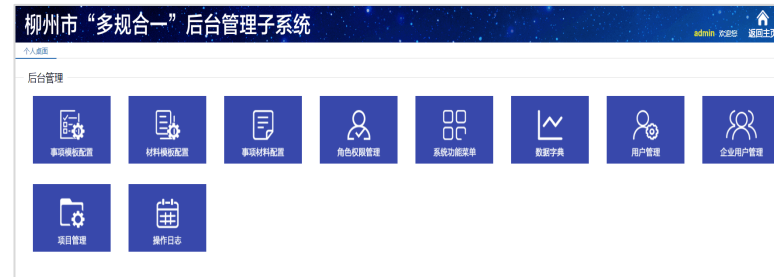
规划编制协同



项目维护管理子系统



规划综合监管子系统



审批系统后台管理

以统一的数据服务超市、应用服务超市来支撑规划编制、实施、监测评价等全过程，从而实现全域覆盖、全要素、全过程服务的目标，建立柳州国土空间规划“一张图”。

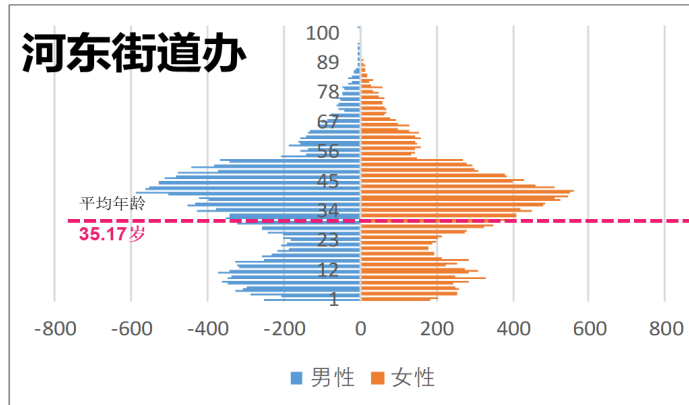
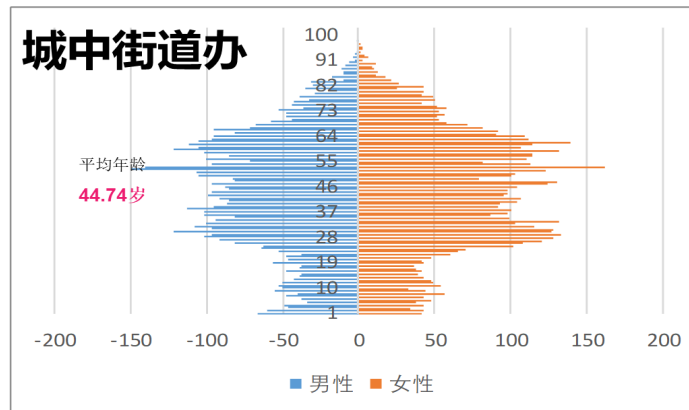
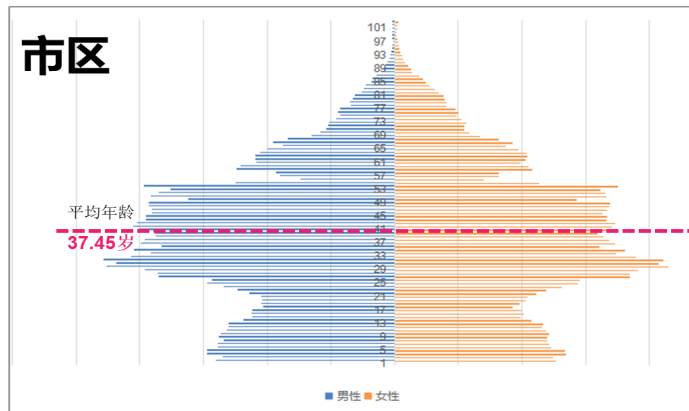
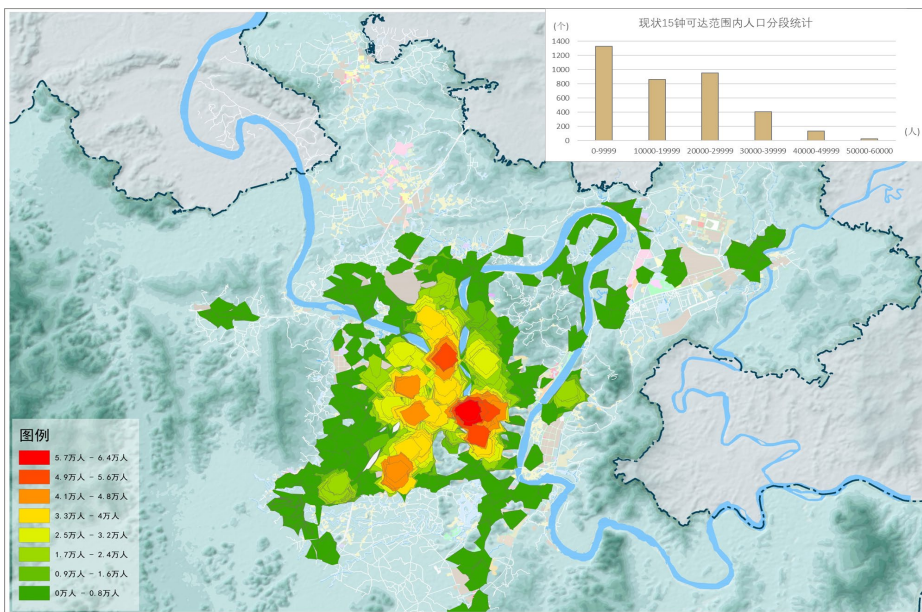
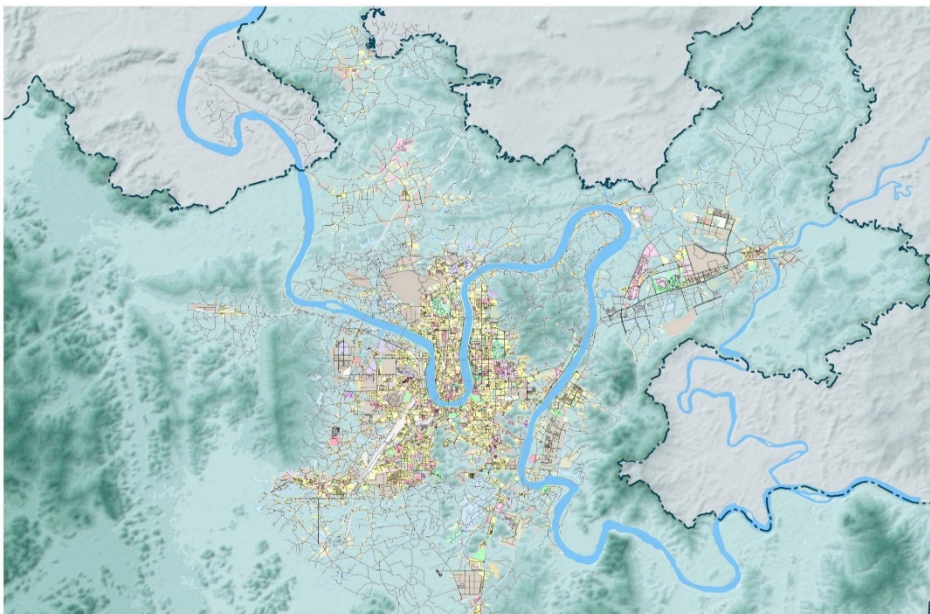
Unified data service supermarket and application service supermarket are used to support the whole process of planning compilation, implementation, monitoring and evaluation, so as to achieve the goal of all-area coverage, all-element and whole-process service, and establish a "map" of Liuzhou's territorial spatial planning.



确保科技支撑能力的可持续发展  
创新管理助力城市建设

Innovative management helps urban development

十四五重点关注





## 加快“北斗+”在自然资源领域的应用

To speed up the Beidou satellite "+" in the natural resources in the field of application

- 完善柳州市行政区连续运行卫星定位服务系统（CORS站）的加密及升级改造工作，并逐步转换为以北斗为主的GNSS测绘服务系统；
- 逐步建立北斗服务平台，运用“北斗+5G”技术辅助自然资源确权登记、自然资源行政执法、地质调查、地质灾害监测预警等工作，提升自然资源调查监测及地质灾害防治等能力。



## 在信息化建设中强化科技创新与驱动

Strengthen science and technology innovation and drive in information construction

- 积极开展云计算、物联网、大数据、微服务、人工智能、新型空间信息等关键技术在自然资源和规划信息化中的应用研究，通过关键技术的深度集成，构建数字化、网络化、智能化为一体的“智慧自然资源”；
- 逐步实现基于信息和知识的科学化、智能化管理决策方式，通过将大数据挖掘和综合分析成果转化为自然资源形势分析研判，增强自然资源辅助决策和综合治理能力。



助力城市形象品牌的可持续发展  
保护城市山水特色风貌

Protect the city landscape features

十四五重点关注



昔日“酸雨之都”

Former: "City of Acid Rain"



今日宜居宜业宜游之都

Today: suitable for employment, living, and travel



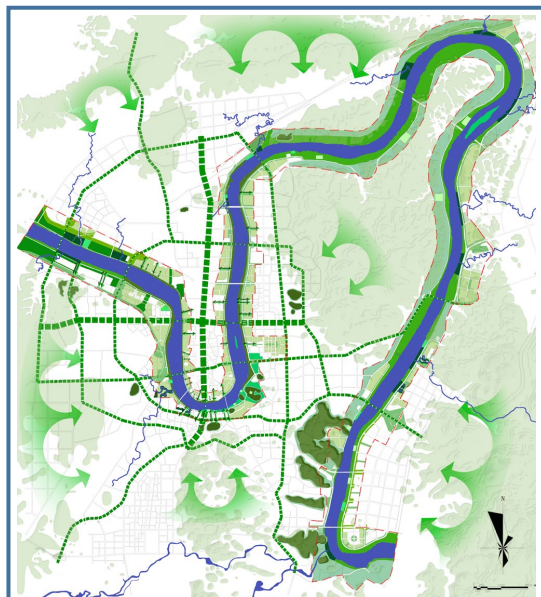
助力城市形象品牌的可持续发展  
保护城市山水特色风貌

Protect the city landscape features

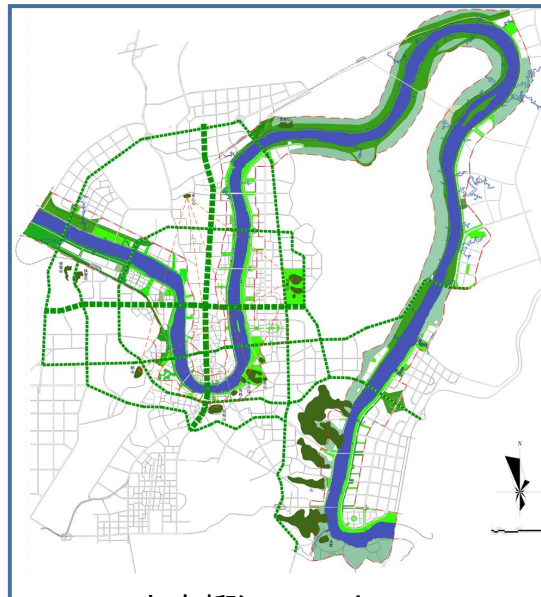
十四五重点关注

# 百里柳江沿线城市设计

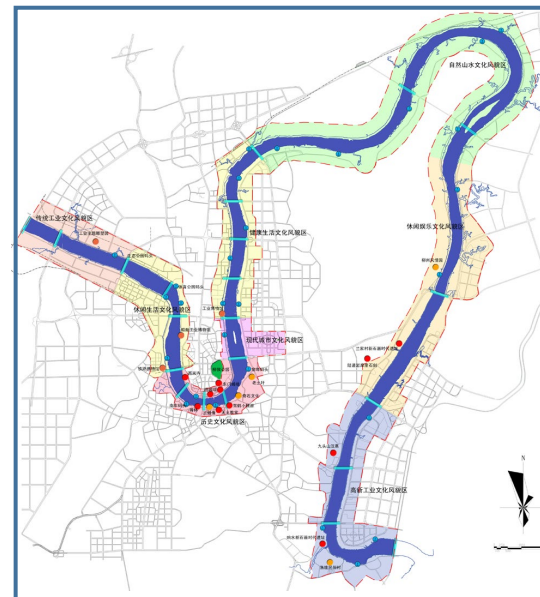
Urban Design along The Hundred-mile Liujiang River



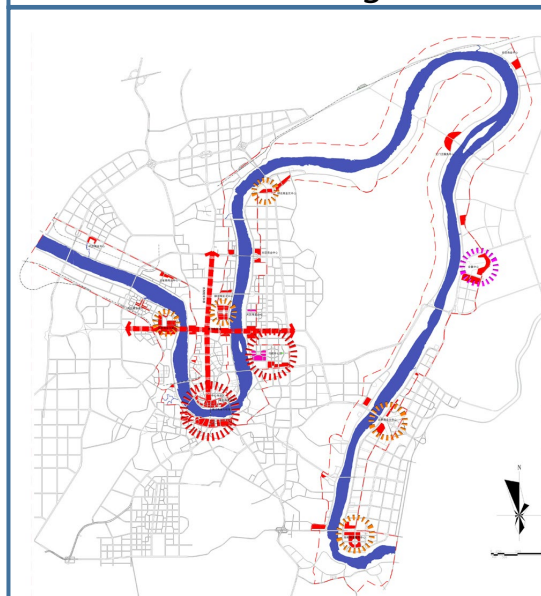
生态柳江 Ecologic



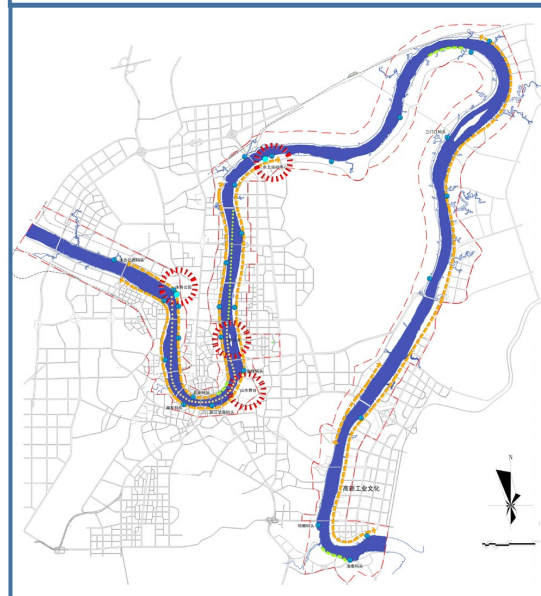
山水柳江 Landscape



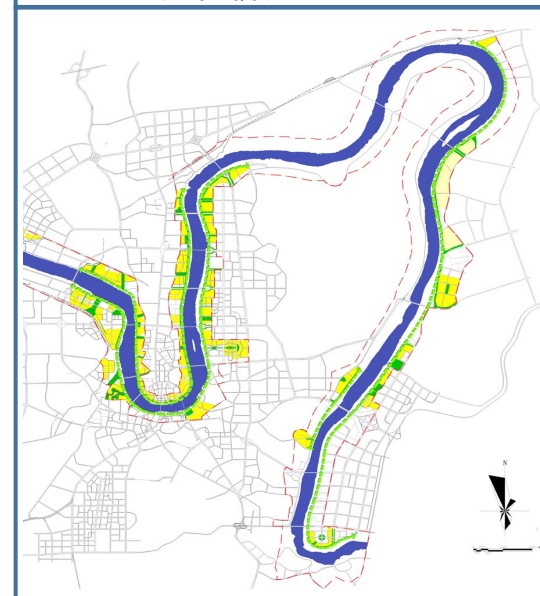
文化柳江 Culture



活力柳江 Living



动感柳江 Dynamic



生活柳江 Livelihood



助力城市形象品牌的可持续发展  
保护城市山水特色风貌

Protect the city landscape features

专项规划  
Special Planning

修编《柳州市莲花山总体规划》，以生态保护优先、兼顾合理利用为出发点，**规范莲花山的资源开发利用以及保障生态环境可持续发展的目的，与柳江河共同形成“一江双绿肺”的城市生态绿心新格局。**

城市设计  
Urban Design

编制《百里柳江沿线城市设计》，进一步研究沿线的景观风貌特色，力求城市设计与富于变化、具有韵律的柳州山水风貌、景观环境相融合，**确定“百里柳江”风貌带、山水景观、历史文化名城保护等规划目标，并对柳州沿江建设项目的体量、造型和色彩进行有效地规划管控。**

控制性详细规划  
Regulatory Plan

修编《河东路北片控制性详细规划调整》《柳州市静兰独凳山片控制性详细规划调整》等规划设计，**坚持控规编制的前瞻性及规划管理法制化，以确保沿江景观环境得到科学的把控。**

景观规划  
Landscape Planning

开展《莲花山区域概念规划》、《柳州市中心区沿江夜景灯光整体提升设计》等，**对沿江不同区段进行针对性的景观引导和控制，强化沿线景观内容的丰富和提升，改善和保护柳州特色的人居环境。**

道路专项规划  
Special road planning

《静兰大桥至阳和大桥段西岸沿江道路规划研究》、《滨江西路壶西大桥至白露大桥段道路工程自行车道及绿化方案设计》等规划的编制和实施，**使沿江道路衔接成环，增强沿江的可达性。在为市民出行提供更好便利的同时，也进一步改善沿江道路的景观效果。**

修建性详细规划  
Site Plan

《百里柳江游客中心规划设计》《东堤旅游码头配套服务设施完善设计》等规划方案以及沿江开发地块项目修建性规划设计等，**提升“百里柳江”建筑风貌，同时也完善“百里柳江”沿线旅游设施，提升服务水平。**

助力城市形象品牌的可持续发展  
保护城市山水特色风貌

Protect the city landscape features



沿江莲花山、古亭山区域保护规划实施。2017年，根据《柳州市莲花山保护条例》的颁布实施及《莲花山保护范围“三区”划分方案》的划定，市自然资源和规划局编制了《柳州市莲花山总体规划》，2019年，开展了莲花山保护范围古亭山片区划分工作。2019年，为科学地指导莲花山区域的生态修复、植被保育、林相改造尤其是速生桉的替换等工作，同时开展《莲花山区域大地景观规划》。

The Lian Hua, GuTing mountain area along the river protection planning and implementation. In 2017, according to the promulgation and implementation of the Regulations on the Protection of Lianhua Mountain in Liuzhou City and the delineation of the "Three Districts" of the Protection Area of Lianhua Mountain, the Municipal Natural Resources and Planning Bureau compiled the General Plan of Lianhua Mountain in Liuzhou City. In 2019, the division of the Guting Mountain area of the Protection Area of Lianhua Mountain was carried out. In 2019, in order to scientifically guide the ecological restoration, vegetation conservation, forest transformation, especially the replacement of fast-growing eucalyptus in the Lianhua Mountain region, carried out the "Land Landscape Planning of Lianhua Mountain Region".





针灸式完善环江滨水大道景观提升工作。为打造能够凸显城市个性的滨水道路沿线景观，给市民休闲运动提供一个良好的环境和空间，沿莲花山地区柳江河岸修建一条约30公里的环江滨水大道，作为“百里柳江”核心段的延伸。该工程现已全线通车，作为环广西公路自行车世界巡回赛其中一个赛点，成功参与举办了多届比赛，被誉为环广西自行车赛最美赛道，是市民休闲娱乐及外地游客来柳观光的精品旅游观光景点。

Acupuncture - style to improve the landscape improvement of the riverside road. In order to create the landscape along the waterfront road that can highlight the city's personality and provide a good environment and space for citizens' leisure sports, a riverside waterfront road of about 30 kilometers is built along the banks of the Liujiang River in Lianhuashan area, as the extension of the core section of "100-mile Liujiang River". The project is now fully open to traffic. As one of the competition points of the Tour Guangxi Road Bicycle World Tour, it has successfully participated in many competitions, and is honored as the most beautiful track of the Tour Guangxi Bicycle Race. It is also a high-quality tourist attraction for citizens to enjoy leisure and entertainment and foreign tourists to visit Liuzhou.

## 强化国土空间规划管控 Strengthen the national spatial planning and control

- 加强国土空间规划与产业发展、基础设施、生态建设、环境保护等相关规划的协调衔接；
- 统筹保障各业各类用地合理需求加快建立完善国土空间基础信息平台，形成国土空间规划“一张图”。

## 建立健全统一自然资源计划管控体系 To build and improve the unified plan control system of natural resources

- 以资源统一管理、空间统一管理和要素系统治理为主要框架内容，构建统一完善的自然资源计划管控体系；
- 以年度指标的形式进一步优化国土空间计划指标，合理调整各类年度计划指标比例；
- 围绕生态文明理念，自然资源和生态环境系统治理要求，强化新增建设占用耕地指标、新增建设用地占用林地指标、新增建设用地占用湿地指标。

## 实行差别化的供地政策 Implement differentiated land supply policies

- 优先保障重大项目、基础配套项目、重大产业项目用地。切实加大扶贫攻坚、民生领域建设用地供应，重点向保障性住房、医疗卫生、教育等民生领域倾斜；
- 支持战略性新兴产业和现代服务业用地。做好房地产用地市场调控，加快房地产去库存用地调整。

## 优化矿产资源供给 Optimization of mineral resources supply

- 开展资源调查，确定重点、限制勘查的矿种；
- 加强采矿证管理，按生产需要核发；
- 开展全市矿业权清理工作，全面清理全市的“僵尸矿权”；
- 依托资源形成产业链，整合矿产资源，形成开采与深加工产业配套，带动下游产业发展。



**优先保障重大项目落地**  
Priority landing of major projects

- 重大基础设施、民生工程、乡村振兴等项目用地
- 推进新增用地计划指标配置精准化、项目化，落实重大项目新增建设用地指标
- 建立项目储备库，实行联合审查
- 优化建设项目用地预审与选址踏勘论证机制

**优先保障基础设施建设用地**  
Priority security infrastructure construction land

- 改革新增建设用地年度计划指标分配方式，优先保障基础设施项目用地计划
- 开通基础设施项目绿色建设用地审批通道

**着力解决企业用地难问题**  
Address the enterprise difficult problem

- 加大产业用地保障力度，统筹优化工业园区布局，引导工业项目在园区内集中布局
- 加快土地报批，增强服务意识，盘活现有可用的存量土地
- 制定和实施针对新产业新业态的灵活供地政策，采取差别化用地政策支持新产业新业态

**全力保障脱贫攻坚战用地需求**  
To guarantee the battle land demand poverty

- 统筹安排易地扶贫搬迁工程及其他扶贫开发项目规划用地指标及空间布局
- 优先保障脱贫攻坚项目新增建设用地计划指标，加大专项指标及奖励指标支持
- 充分运用城乡建设用地增减挂钩试点以及脱贫攻坚战有关政策，做好扶贫项目用地保障