



Reggio Emilia  
città  
delle persone



# THE MUNICIPALITY OF REGGIO EMILIA



# Reggio Emilia, a middle-size town in Northern Italy

## EMILIA-ROMAGNA Region

Population: 4,5 Milions

Provinces: 9

Municipalities: 348

Surface: 22.510 km<sup>2</sup>

## Municipality of Reggio Emilia

Population: 171.879

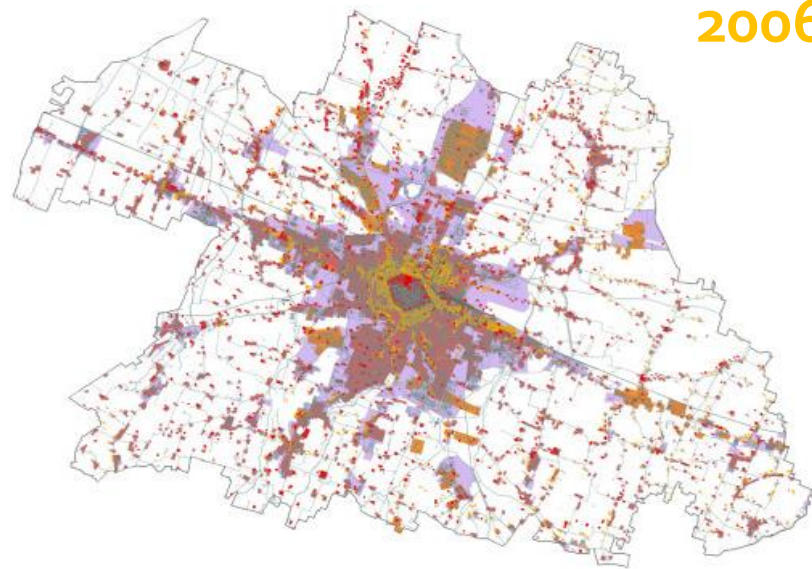
Surface: 231 km<sup>2</sup>



**Reggio Emilia is connected to the national and European high-speed train network, which makes of the city one of the easiest to access from abroad.**



# The territory in Reggio Emilia



2006

The process of industrialization, the growing of the population and the enlargement of the urban areas **increased drastically the traffic jam and the pollution.**

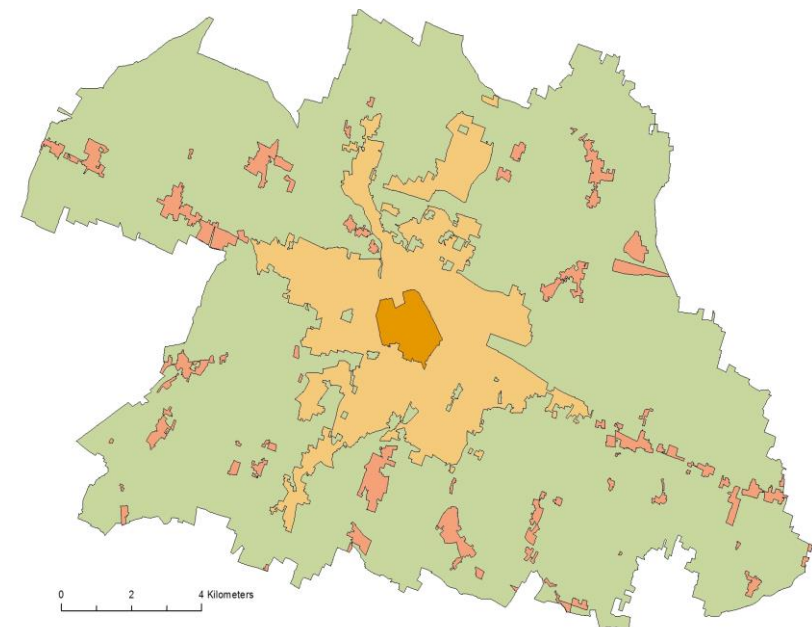
Most part of the commuting is done by private cars, with a **national average of 646 cars for 1000 people.**



**47** km<sup>2</sup> Urban area



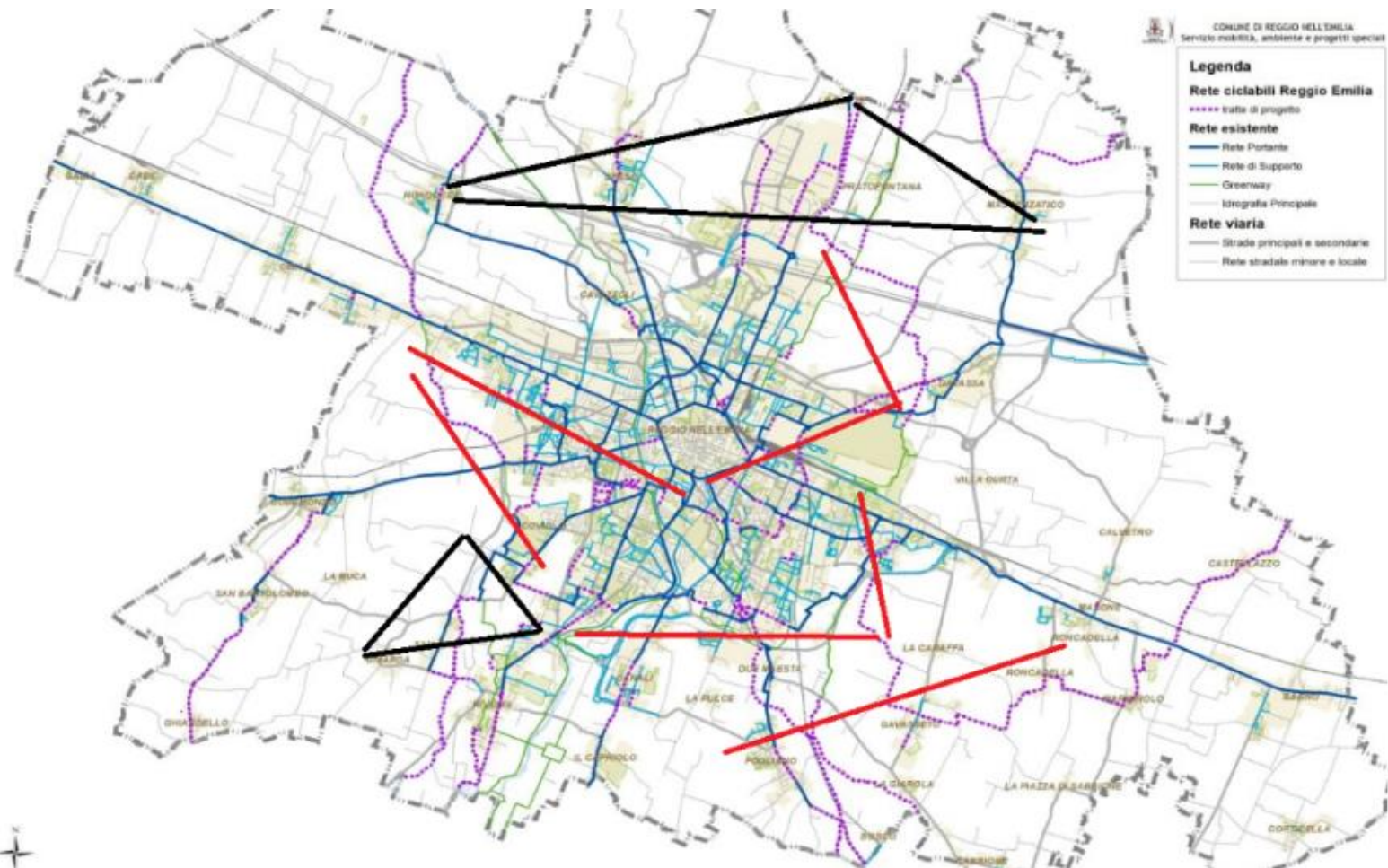
**185** km<sup>2</sup> farming area



# Mobility situation inside the Municipality

good  
connections

poor  
connections

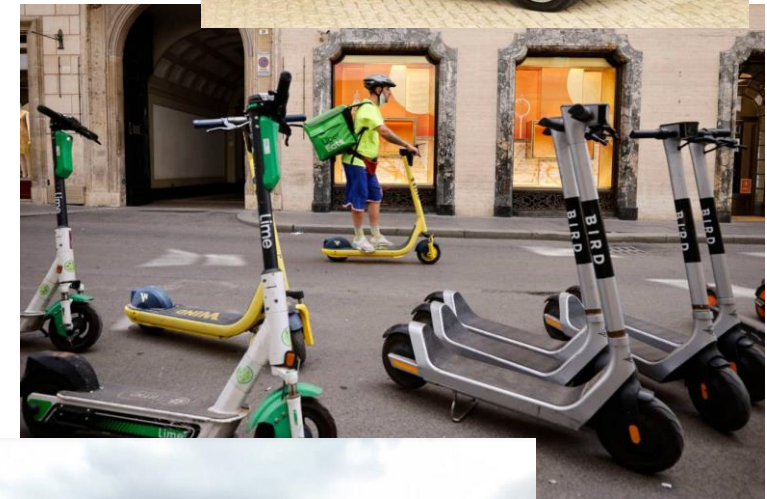


1. Low/zero emission solutions (bike, EV, etc)
2. 15-minutes city concept
3. More and better cycling lanes
4. Bike-to-work
5. Education and mobility



# 1. Spread low carbon solutions (bike, EV, etc)

- Bike-sharing
- Electric scooter sharing
- Experimentation of self driving electric busses
- New tramway line



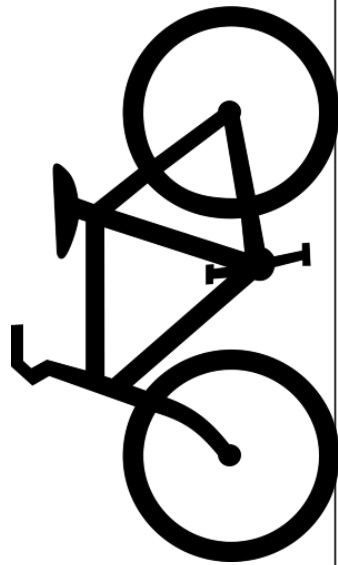
## 2. 15-minutes city concept

- Reduce the needs to move by car to find the basic services.
- Everything under 800m and/or 15 minutes walking.
- Already stressed in city like Paris or Milan
- To be implemented before 2030 in Reggio Emilia.

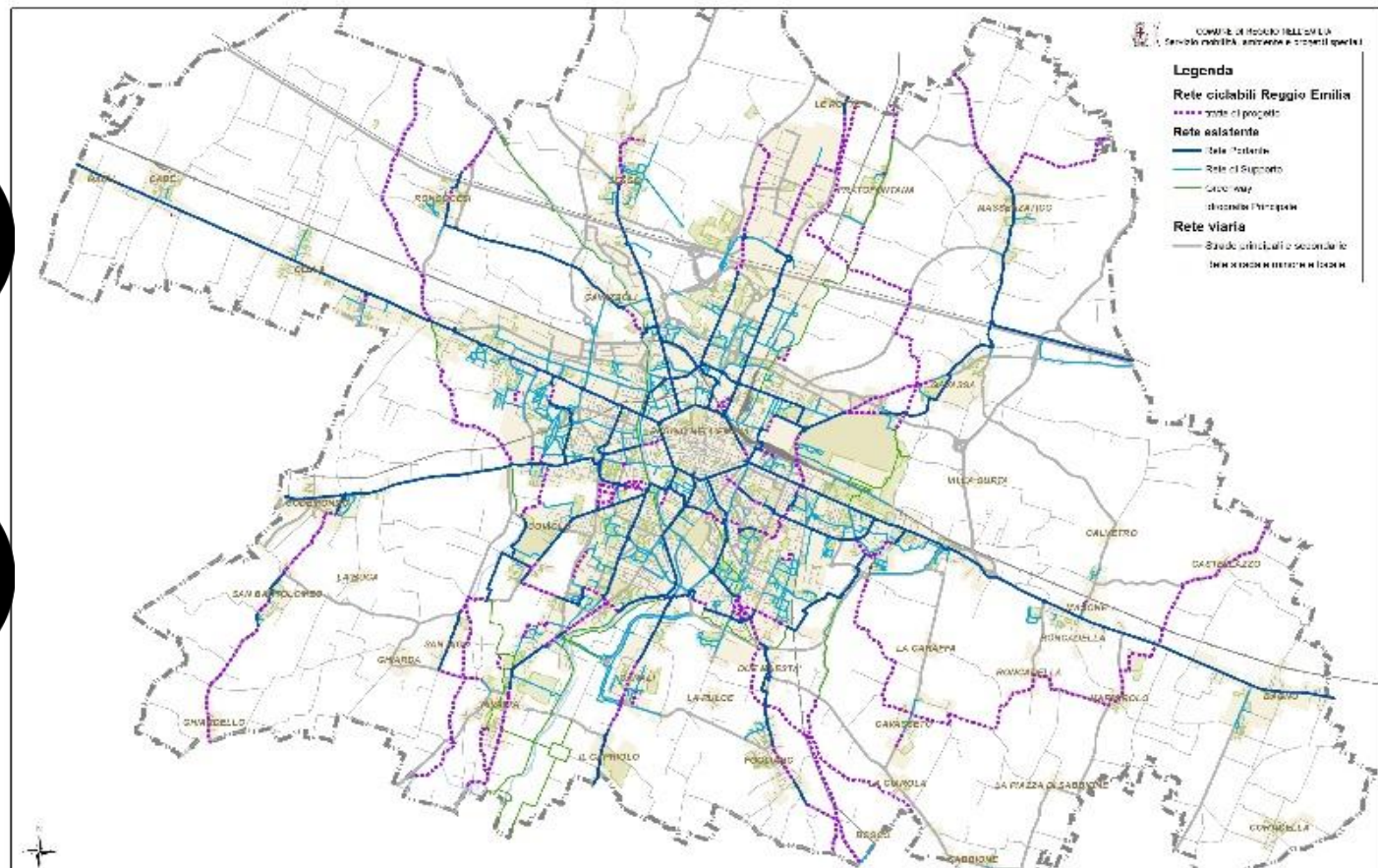


### 3. More and better cycling lanes

- 2<sup>nd</sup> city in Italy for km of bike lanes (2021).
- 1<sup>st</sup> “Bike-friendly city” in Italy (2022)



Cycling Map 2019



## 4. Bike-to-work

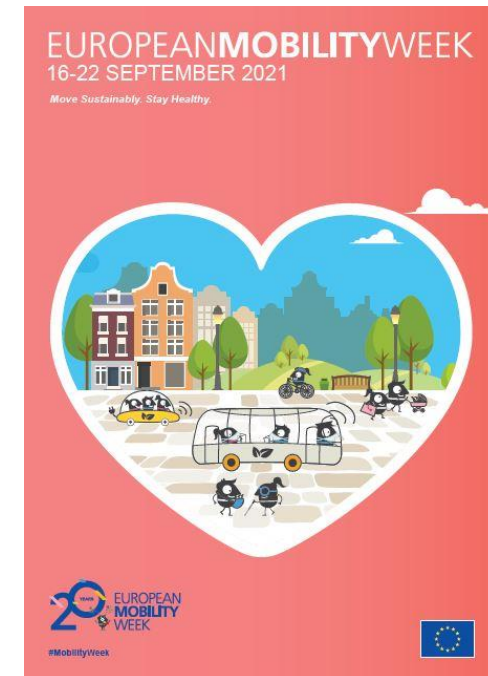
- Pilot project to promote the bike commuting between home and working places.
- Through an app and a geolocalisation system.
- Economic compensation for each km done by bike.



## 5. Education and mobility

- “Bicibus” and “Pedibus”, i.e. walking and biking children monitoring to bring children to school, to reduce number of cars around.
- Creation of the post of “School Mobility Manager” in each institute.
- Educational activity in schools during the European Mobility Week.
- School Chance, EU funded project to reduce the environmental impact of transport to schools

<https://www.interregeurope.eu/schoolchance/>





Reggio Emilia  
città  
delle persone



# THANK YOU FOR YOUR ATTENTION!

Contact:

**Sabrina Rosati**

Project Manager at E35 Foundation

[Sabrina.rosati@e-35.it](mailto:Sabrina.rosati@e-35.it)

