

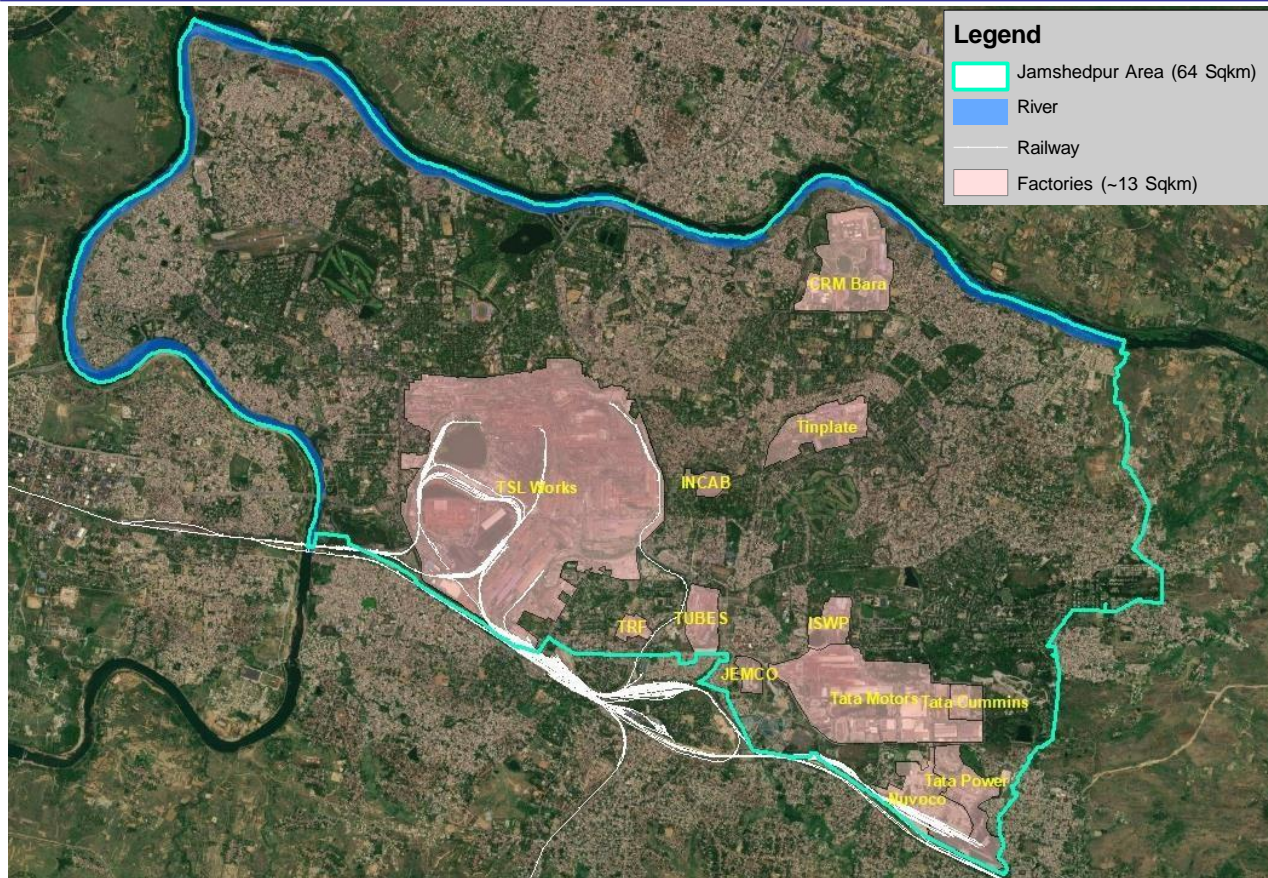
# Quality of Life at Jamshedpur

Jamshedpur-Alto Minho-IURC India Meeting  
on March 11, 2022

Rajiv Kumar

- B.Tech. Civil and Environment Engg. from N.I.T. Jamshedpur
- Joined Tata Steel in 1990 as a Assistant Engineer Trainee
- 14 months Management Program from XLRI
- Worked in Engineering Projects, Rural & Community Services, ED Office, Aspire Programme, JUSCO, VP CS's office
- Presently, Chief of Town Infrastructure & Logistics
- Present responsibilities
  - Administration
  - Town infrastructure planning and execution
  - Sustainability planning and execution
  - Lease land management at Jamshedpur
  - Real Estate asset management
  - Contract administration of services provided by JUSCO

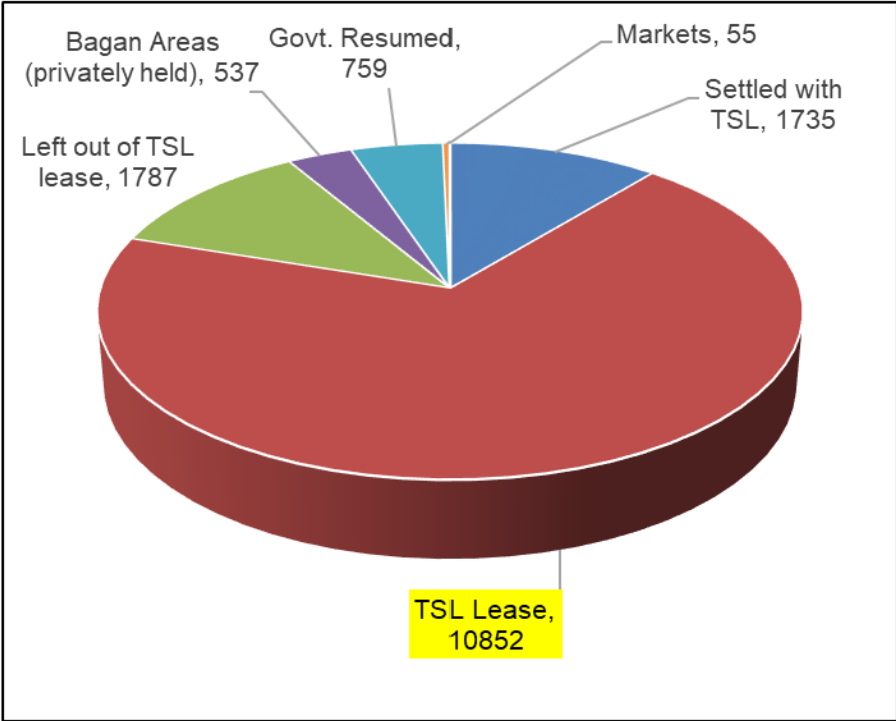
- **Background**
- Quality of Life
  - Connectivity and roads
  - Power, Water and Sanitation
  - Green cover and Parks & Gardens
  - Medical
  - Education
  - Sports – facilities and promotion
- Challenges and opportunities for further improvement



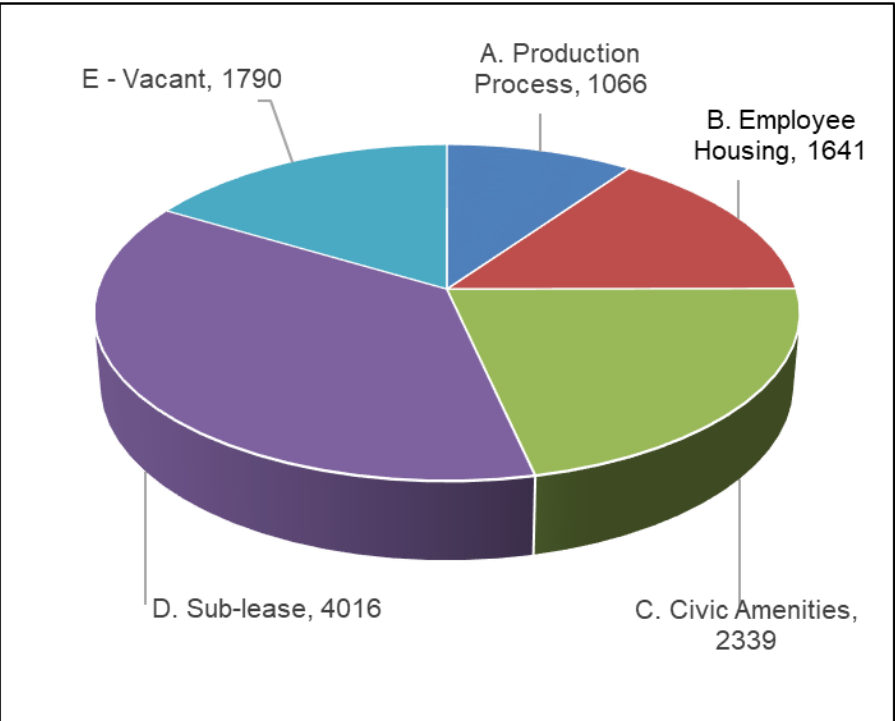
- Jamshedpur city is spread over an area of **15725 acres**, bound by
  - North - River Subernarekha
  - West - River Kharkhai
  - South - South-Eastern Rail line
- **An industrial town having**
  - Tata Steel Ltd
  - Tata Motors Ltd
  - Tinsplate Co. of India Ltd
  - Indian Steel & Wire Products Ltd
  - Tata Power Co. Limited
  - Nuvoko Vistas Corp. Ltd
  - Tata Robins Fraser Ltd
  - Jamipol Ltd
  - Tata BlueScope Steel Ltd
- **There is no Municipal Body in Jamshedpur**

- Land measuring 15,725 acres was acquired under Land Acquisition Act 1894 and conveyed on absolute ownership in favour of Tata Steel Limited (TSL) by two deeds of conveyance of 1912 and 1929.
- As part of the land reforms in independent India, the status of absolute ownership got converted into a lease under Bihar Land Reforms Act which got executed by the State of Bihar in favour of TSL initially on 1<sup>st</sup> August 1985 for a period of 40 years with retrospective effect from 1<sup>st</sup> January 1956 with a provision for renewal at the Company's discretion for a period of 30 years each time.
- The lease has been renewed by State of Jharkhand on 20<sup>th</sup> August 2005 for a period of 30 years commencing from 1<sup>st</sup> January 1996. ***The current lease is valid till 31<sup>st</sup> December 2025.***
- ***As per the lease agreement, TSL is obligated to provide municipal services in the city***
  - Piped Water Supply
  - Sewage Management
  - Sanitation
  - Municipal Solid Waste
  - Sanitation & Vector Control
  - Town Planning
  - Horticulture
  - Road Maintenance
  - Street Lights

### Jamshedpur Land – 15725 acres

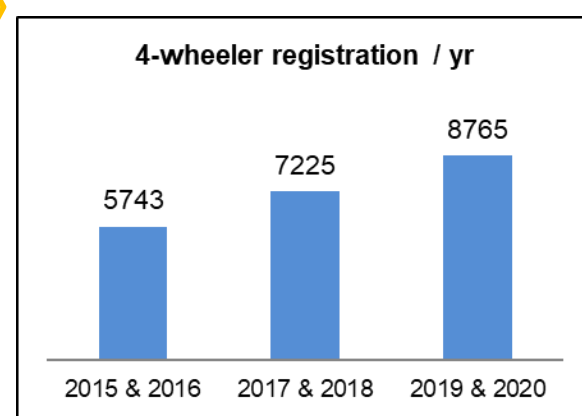
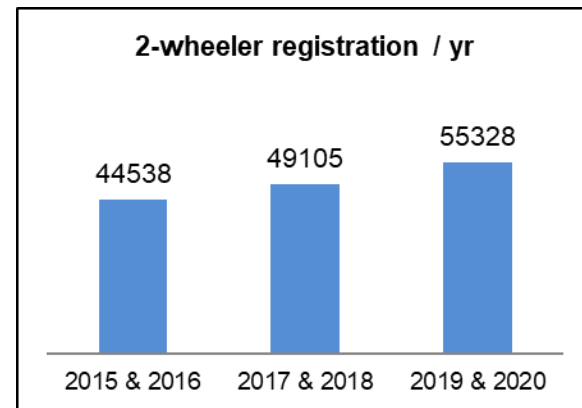
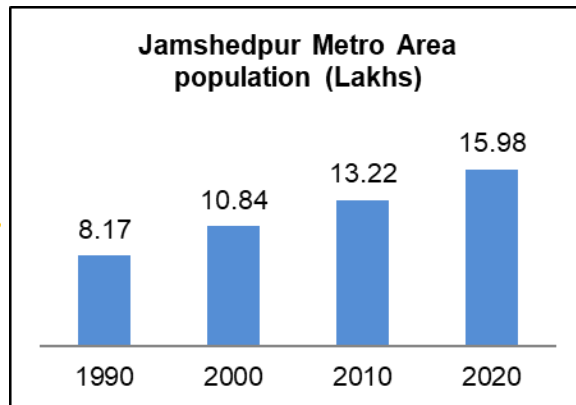
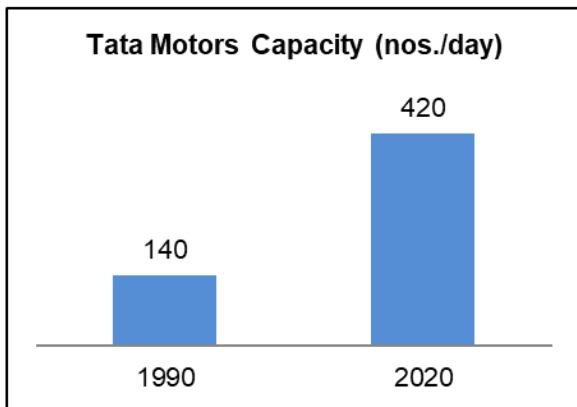
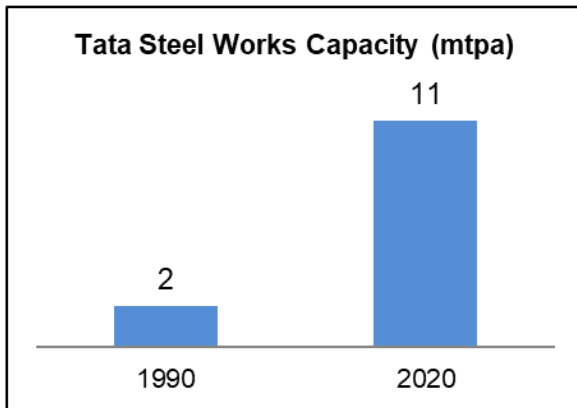


### TSL Lease Land – 10852 acres



- In 1924, the entire 15725 acres of land was exempted from the Bihar & Orissa Municipal Act, 1922 and was governed by a nominated Jamshedpur Notified Area Committee (JNAC).
- The Committee was dissolved in 1998, pursuant to 74<sup>th</sup> Amendment of Constitution of India in 1993 - article 243Q makes a mandatory provision for every urban area to have an elected local body thereby providing citizens the right to 'third vote'.
- Pursuant to representations of TSL and then Hon'ble Chief Minister, Orissa for Rourkela Steel Plant of SAIL, Article 243Q(1) was introduced which provided for creation of Industrial Township in urban areas where municipal services are being provided by an Industrial establishment.
- Like other States, Bihar amended its Municipal law to make it consistent with the Constitutional provisions and introduced the concept of Industrial Township.
- Thrice in the past (1972, 1990 and 2005), the State Government has initiated the process of declaration of municipality at Jamshedpur through 'notification inviting objections', which were successfully contested and opposed by TSL as well as by citizens of Jamshedpur.
- ***Since 1994, TSL has been making representations to the Government for declaration of Jamshedpur as Industrial Township.***

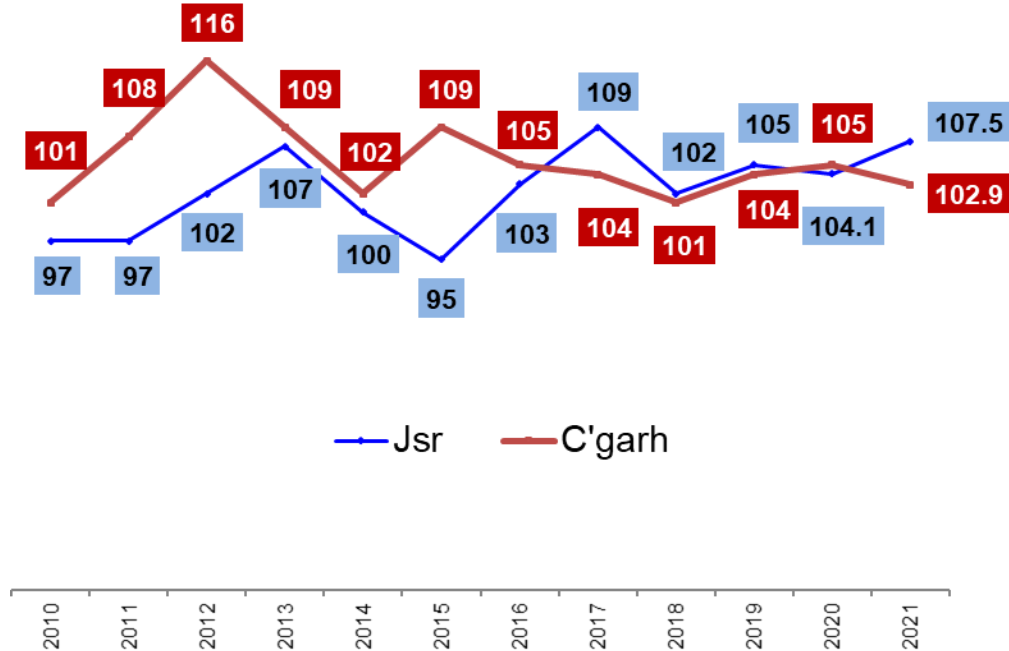
# Growth in the town since 1990





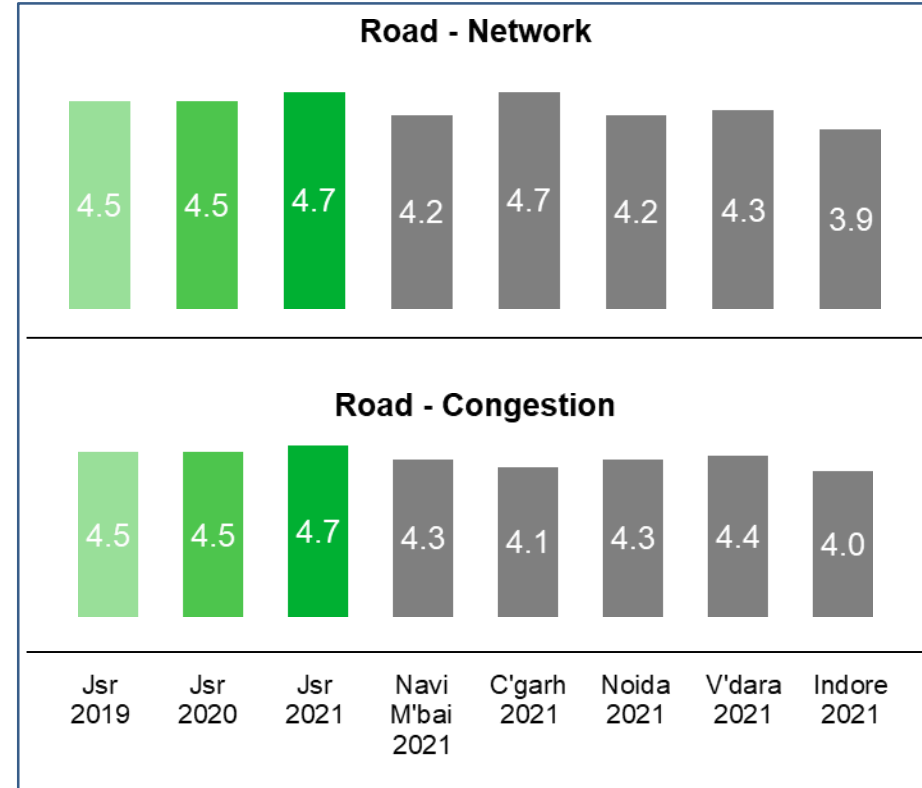
- Background
- **Quality of Life**
  - Connectivity and roads
  - Power, Water and Sanitation
  - Green cover and Parks & Gardens
  - Medical
  - Education
  - Sports – facilities and promotion
- Challenges and opportunities for further improvement

## Overall QoL Index

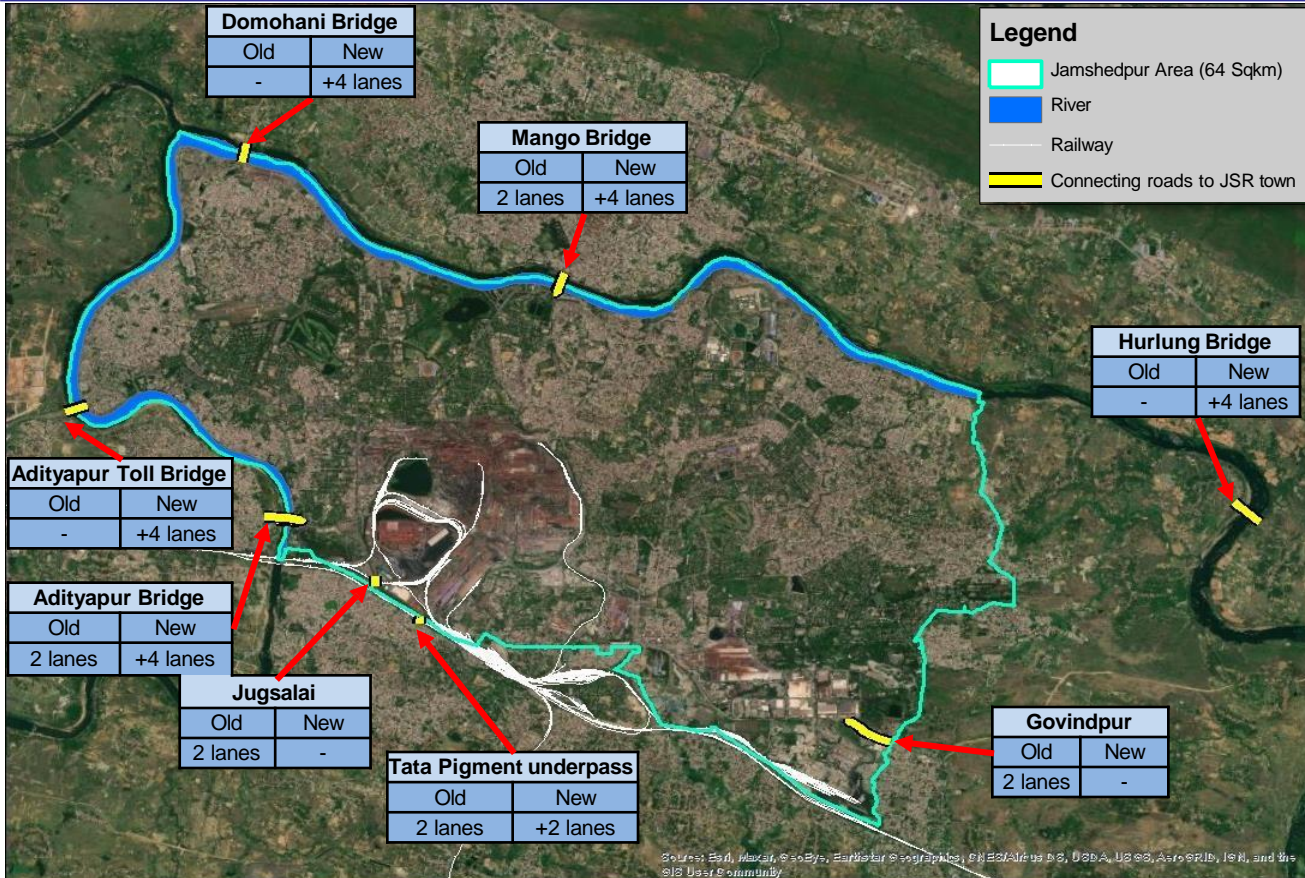


- AC Nielsen engaged to conduct a 'Quality of Life' survey in 5 cities
  - Jamshedpur
  - Chandigarh
  - Navi Mumbai
  - Noida &
  - Vadodara
- Factors include Road, Power, Water, Public Health, Law & Order, Education, Civic Facilities, Public Transport, Connectivity, Urban Environment and Entertainment.
- ***Jamshedpur's citizens have almost always been happier than their counterparts in other cities.***

- ‘Road’ is considered as one of the most important factors affecting ‘Quality of Life’
- Growth of industry, population and traffic in city has necessitated continuous upgradation of roads, which have been addressed through:
  - Improving connectivity with outside (combined)
  - Creation of ring road (called Marine Drive) to reduce congestion within city (TSL)
  - Improvement of city roads (TSL)
- These have ensured that Quality of Life has not been adversely impacted.

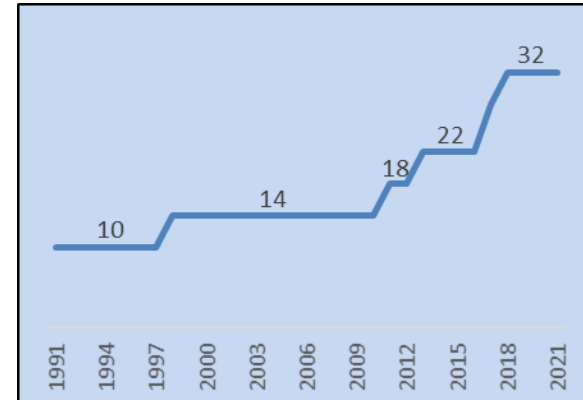


# Road connectivity with outside

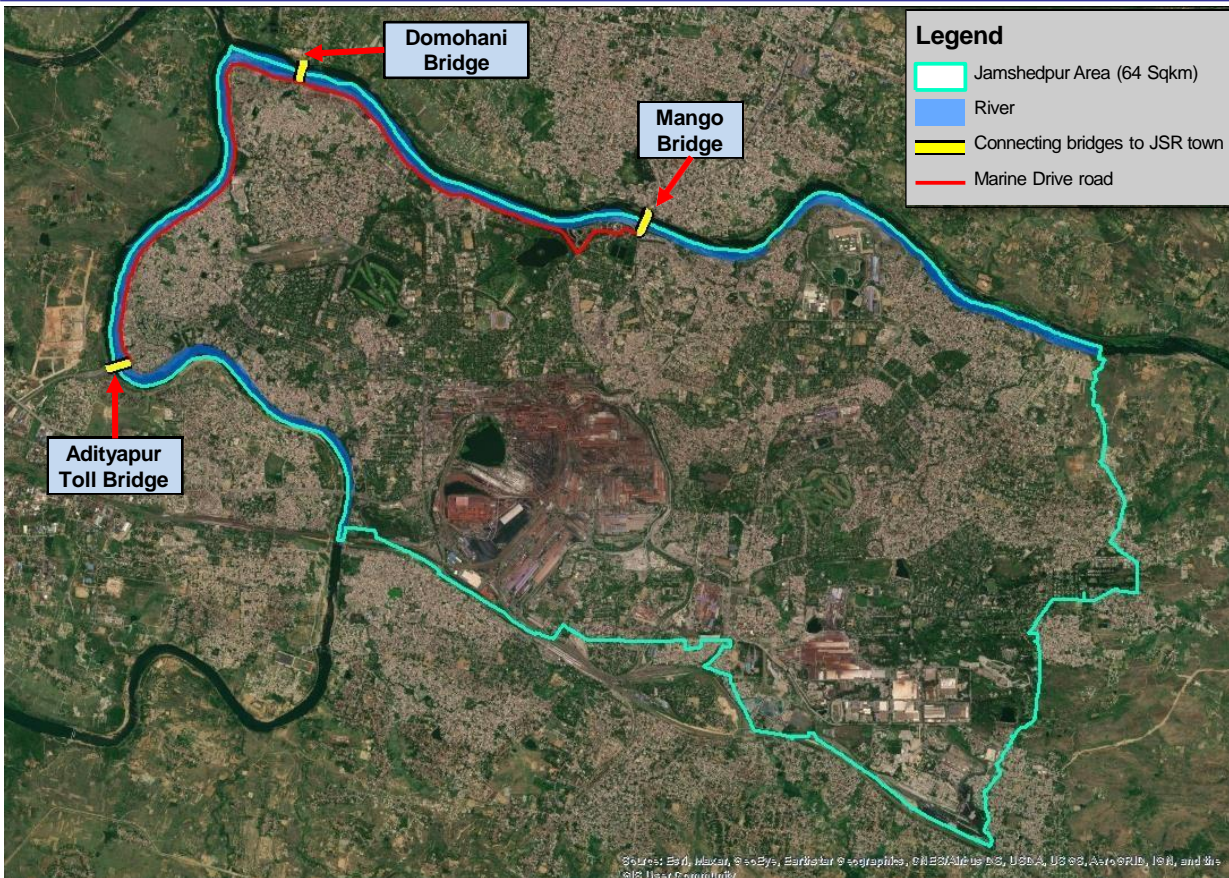


Connectivity with outside has improved from 10 lanes to 32 lanes in last three decades.

- Three new routes created
- Capacity of existing routes enhanced







- Marine Drive (4-lane, 10.7kms long corridor) has been created along rivers connecting three bridges.
- This has enabled
  - By-passing of 'through' traffic
  - Reduction of heavy traffic within city.





# City roads



- During last 5-6 years most major roads have been widened and provided with safety features like footpath, dividers and slip roads.
- All roads are well-lit with LED lamps.



## Power - Availability



## Power - Quality



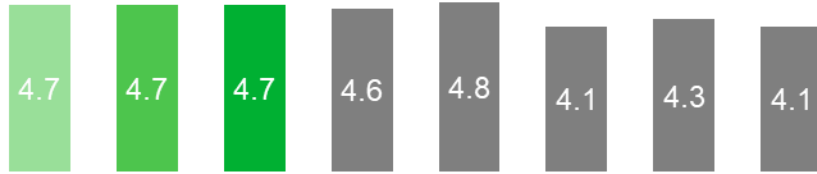
## Power - Tariff



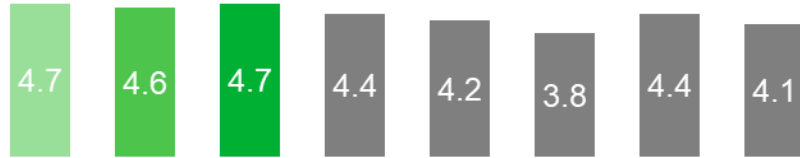
Jsr 2019    Jsr 2020    Jsr 2021    Navi M'bai 2021    C'garh 2021    Noida 2021    V'dara 2021    Indore 2021

- Citizens have expressed their satisfaction on all key attributes of Power Distribution i.e. Availability, Quality & Tariff.
- Power availability - investments made in generation units (along with Tata Power) within the city which meets ~80% of total requirement of ~1000 MW.
- Power supply reliability - sustained maintenance and upgradation thereby achieving >99.5% availability.
- Power quality - voltage fluctuations is so good that ***stabilizers are not required in the city.***
- Power Tariff (regulated) - maintained at levels much lower than other cities by controlling T&D\* losses at benchmark levels of <3%.

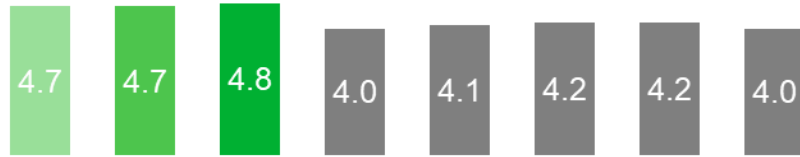
## Water - Availability



## Water - Quality



## Water - Tariff



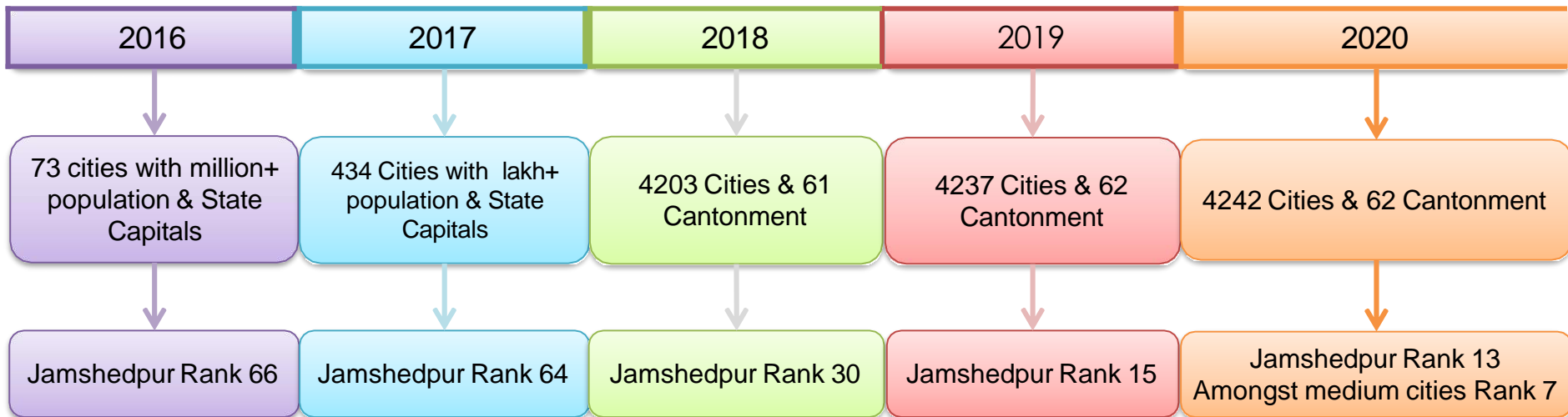
Jsr 2019	Jsr 2020	Jsr 2021	Navi M'bai C'garh 2021	Noida 2021	V'dara 2021	Indore 2021
----------	----------	----------	------------------------	------------	-------------	-------------

- Citizens have also expressed their satisfaction on all key attributes of Piped Water Supply i.e. Availability, Quality & Tariff.
- Being a politically sensitive issue, tariff correction remains a challenge.
- Quality is ensured through professionally managed treatment processes: **entire city drinks water directly from the tap.**

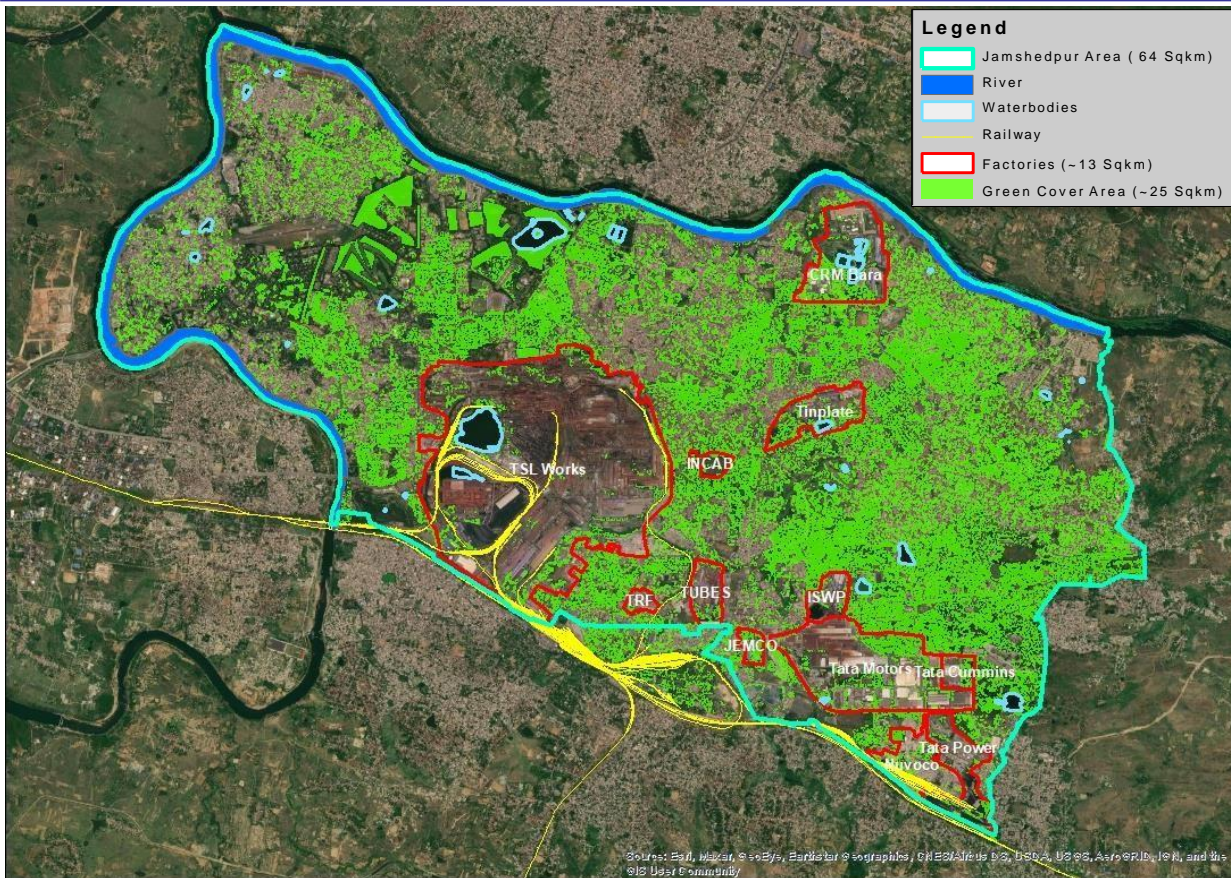




# Cleanliness and sanitation - Swachhta Survekshan by Govt. of India



- Jamshedpur is one of the cleanest and most sanitized cities in the country.
- Efforts include municipal solid waste management, sweeping of roads, cleaning of markets, vector control, anti-larval treatment, stray dog sterilization, etc.



- Green cover has improved significantly through sustained efforts on plantation (every year ~1 lakh trees are planted).
- >39% green cover is highest amongst industrial towns in India.
- Miyawaki technique is being widely adopted to create dense vegetation.



# Green Cover (contd..)

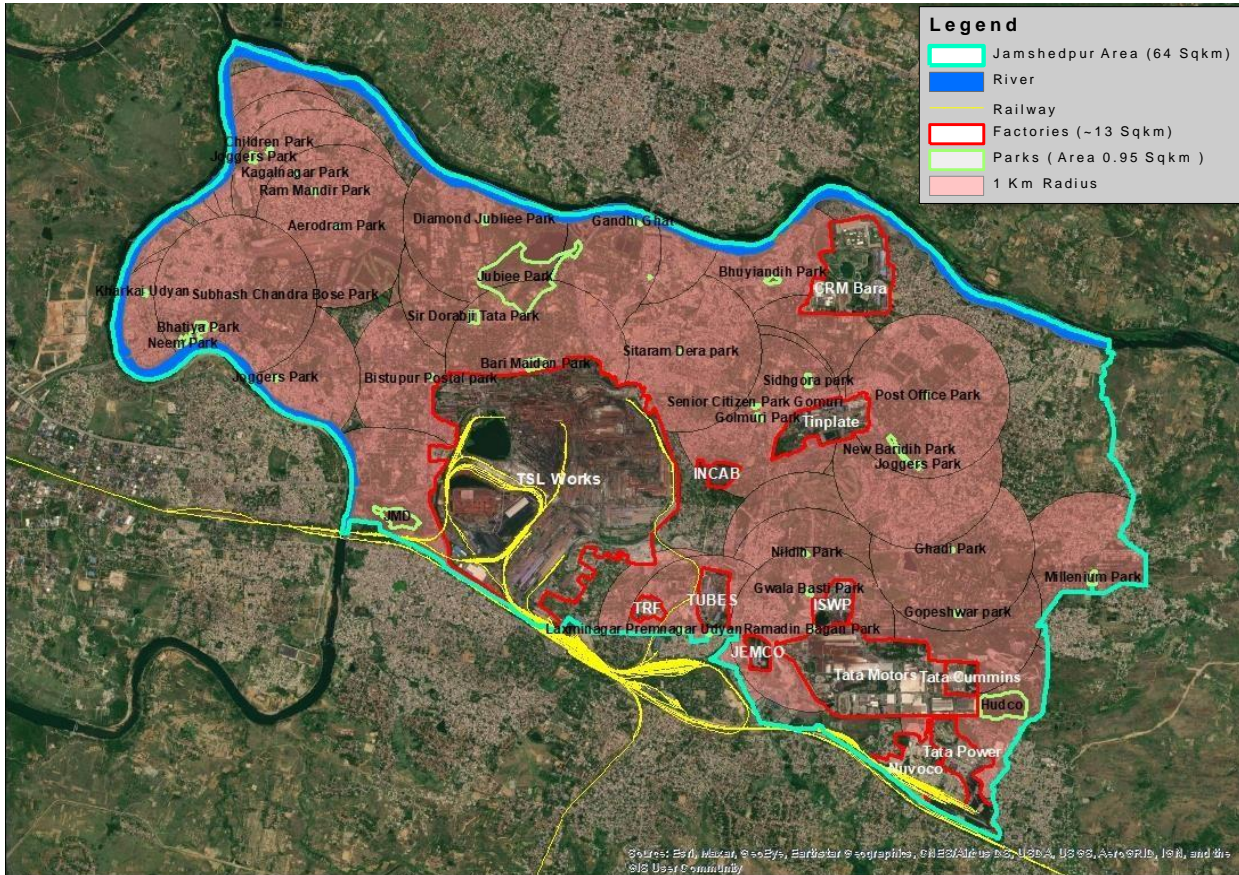






# Green Cover (contd..)





- While Jubilee Park (created in 1957) continues to be the main attraction, several parks have been developed across city.
- 40 parks (cumulatively ~200 acres) are spread across the city
- >85% of town has access to a park within 1km of residence



# Jubilee and Sir Dorabji Tata parks



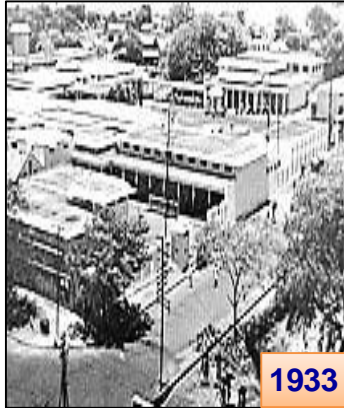
Jubilee Park, spread over an area of ~200 acres, is the pride of the city and attracts visitors round the year. Zoological Park, Nicco Amusement Park, Laser Fountain, etc located within the park add to its attractiveness.



Sir Dorabji Tata park has been renovated recently along with creation of a huge steel structure replica of the famous Jubilee Diamond.



1908



1933



1919



1974



- 983-bed tertiary care hospital with 9 super-specialties and 18 specialties – most introduced in last decade
- Over 2600 trained personnel - over 350 doctors, 700 nurses and 150 paramedics, technicians & pharmacists
- 16 Lakh OPD footfalls and 60,000 admissions annually
- ISO 9001:2015, NABH accreditation & NABL certification

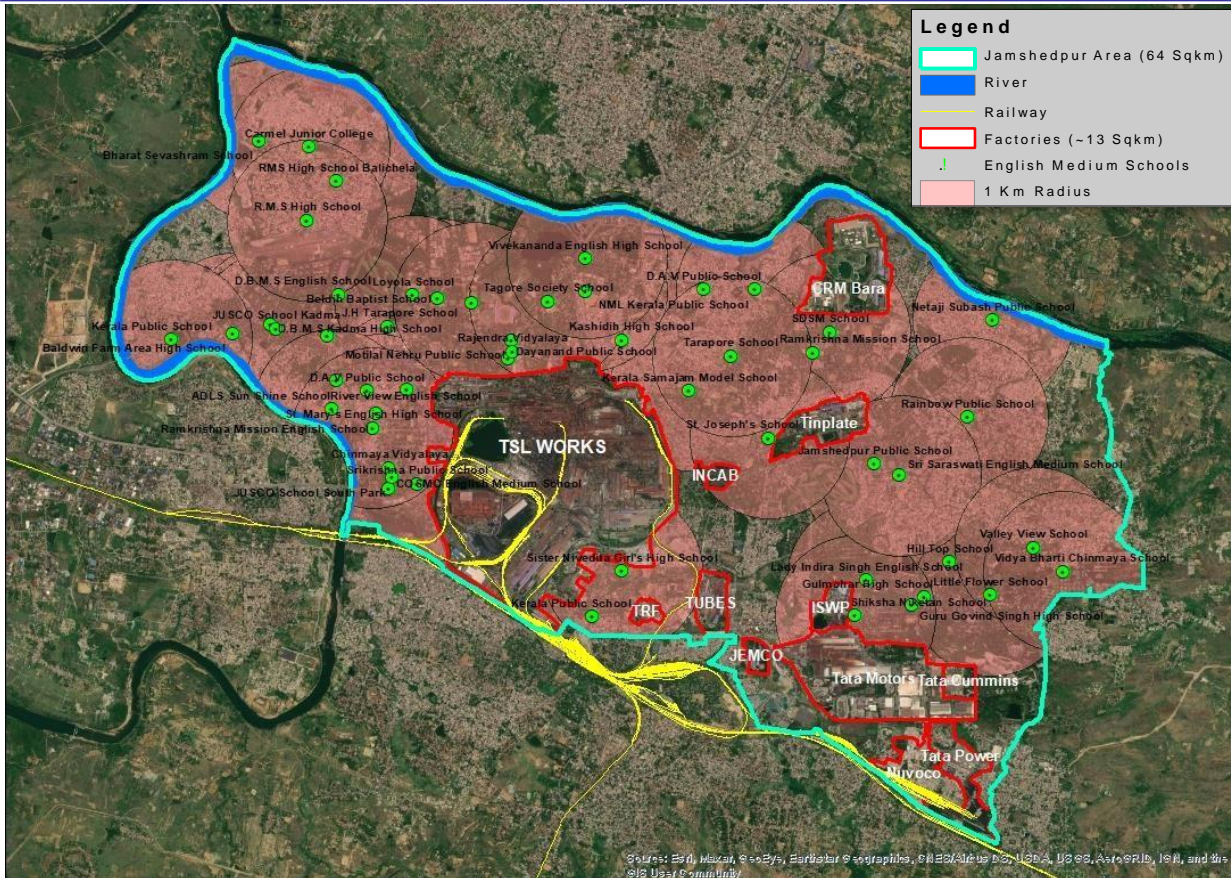


# Tata Main Hospital (contd..)

- 1992 Nuclear Medicine & BCU
- 1993 OPD Complex
- 2002 CCU
- 2012 HDU
- 2015 Cathlab
- 2017 DEXA Scan Machine
- 2018 Medical & Surgical Oncology
- 2019 Bone Marrow & Renal Transplant







- Tata Steel had >25 vernacular medium schools till 1990
- These were out-sourced to professional educational institutions in a phased manner during nineties.
- >90% of town has access to good English Medium school within 1km of residence
- **Jamshedpur can boast of having one of the best school education (upto +2) in the country.**



# Jamshedpur Football Club (JFC)



- JFC, a professional football club, was launched by TSL in 2017 to participate in Indian Super League.
- It has garnered huge fan following within the city and created unprecedented community connect on the back of its grass root program with school children.

# J R D Tata Sports Complex (JRDTSC)



- Constructed in 1991, JRDTSC is a multi-sports stadium having:
  - Synthetic Athletics Track
  - Football Pitch – *the home ground of Jamshedpur Football Club*
  - Olympic size Swimming Pool
  - Basketball Courts
  - Tennis Courts
  - Volleyball Courts
  - Cricket Pitches with bowling m/c
  - Table Tennis area
  - Boxing Rings
  - Gymnasiums
  - Chess Centre, etc
- Has a seating capacity of ~25000



# Tata Football Academy (TFA)



- Established in 1987 with objective of uplifting standard of football, TFA is certified as a 4-star academy by AIFF.
- 250+ footballers have so far graduated from TFA's 4-year training program, 150+ of whom have represented India.



# Tata Archery Academy (TAA)



- TAA was established in 1996 with the objective of tapping the inherent talent of the tribal belt to produce world-class archers.
- 170+ archers have so far graduated from TAA's 4-year training program who have bagged 200+ international medals.
- Indian Olympic squad has always been dominated by TAA products.
- TAA is proud of its 2 Padma Shri, 3 Dronacharya and 6 Arjuna awardees
- In the recently concluded Archery World Cup Stage 3 at Paris, TAA products won Recurve Gold Medal in Women Team, Mixed Team & Women Singles.





# Naval Tata Hockey Academy (NTHA)



- NTHA was established in 2017 with the objective of professionalizing hockey in the tribal belt of Jharkhand and Odisha which possess inherent talent and have had a history of producing world-class players.
- NTHA offers 4-year training program for 25 boys inducted alternate year.



# High Performance Centre (HPC)



- HPC was created in 2018 to provide world-class Sports Science support by
  - Improving critical health & fitness parameters and sport-specific capabilities
  - Reducing time of recovery and rehabilitation post injury
- HPC possesses experts from:
  - Sports Physiotherapy
  - Sports Psychology
  - Sports Nutrition
  - Sports Biomechanics
  - Sports Medicine
  - Strength & Conditioning



# High Performance Centre (HPC) – contd..



## Cryotherapy (CryoChamber)

A therapy to relieve muscle pain, sprains and swelling after tissue damage or heavy training.

## VO2 Max Cardio Apparatus

Maximal Oxygen Uptake (VO<sub>2</sub>max) is the best measure of cardio-respiratory endurance capacity.



- Background
- Quality of Life
  - Connectivity and roads
  - Power, Water and Sanitation
  - Green cover and Parks & Gardens
  - Medical
  - Education
  - Sports – facilities and promotion
- **Challenges and opportunities for further improvement**

- Bettering environmental compliances
- Making Jamshedpur a 'smart' and 'sustainable' city
  - Municipal Solid Waste management – *under implementation*
  - Harvesting solar energy – *under implementation*
  - GIS based city management – *under implementation*
  - Mass transit
- University for higher education

# Main Gate of Tata Steel Works



Thank You